

clever – creative – sustainable – smart



Foldable boxes

FOLDABLE BOXES



Developing growth

Space saving

When supplying branches, empty containers often have to be returned and stored.

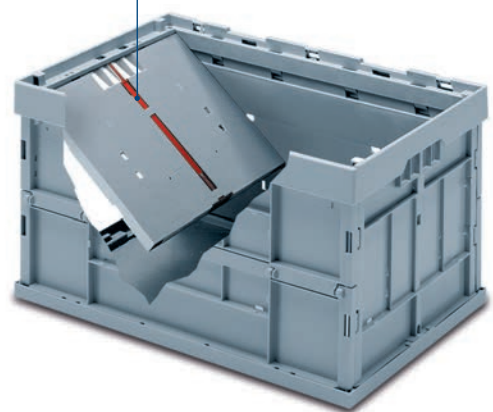
As empty foldable boxes can be reduced by up to 25 % of their original size, a maximum of four times as many empty collapsible containers can be stored on the same floor space than would be possible with rigid containers. This enables the transport costs to be reduced accordingly.



Folding system

On an erected foldable box the short sides are folded up and the long sides are folded, which thereby reduces the height of the foldable box to the height of the upper frame together with the base.

Foldable box with locking pin



Folding box variants

foldable box with circular locking

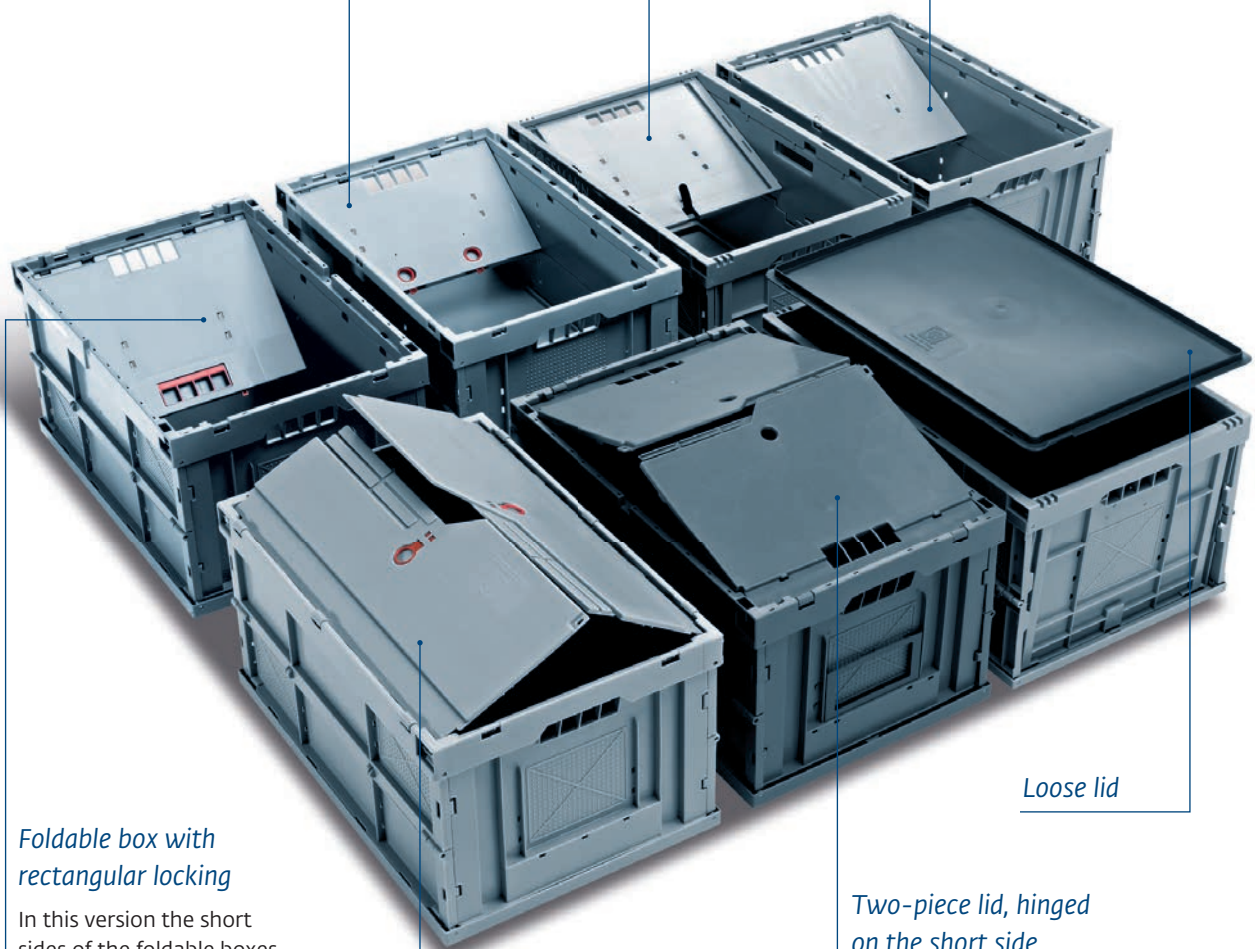
The short sides of the foldable boxes with lock are secured not only to the upper frame, but are also connected to the base by means of the lock. To fold up the box, the lock on the inside of the box has to be opened.

Foldable box without lock, with opening flap

In the case of a foldable box without a lock but with a opening flap, the short sides can be folded up either by pressing from the outside or by pulling on the opening flaps mounted on the inside.

Foldable box without lock

In the case of a foldable box without a lock, the short sides are only connected to the upper frame, but not to the base. To fold up the sides, they must be inserted from the outside.



Foldable box with rectangular locking

In this version the short sides of the foldable boxes are connected to the base with a lock. To fold up the box, the lock on the inside of the box has to be opened. With the rectangular locking this is done by lifting the rectangular closure mechanism with four fingers.

Two-piece lid, hinged on the long side

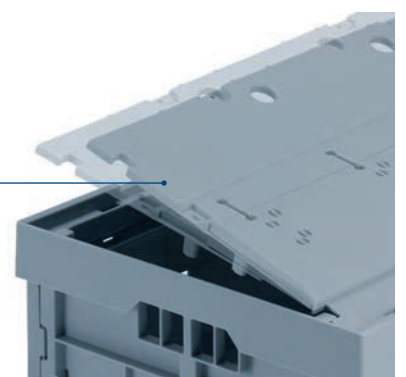
With a two-part lid, the two lid halves grip into each other. Both halves can be opened again with a gripping flap or a gripping hole.

Loose lid

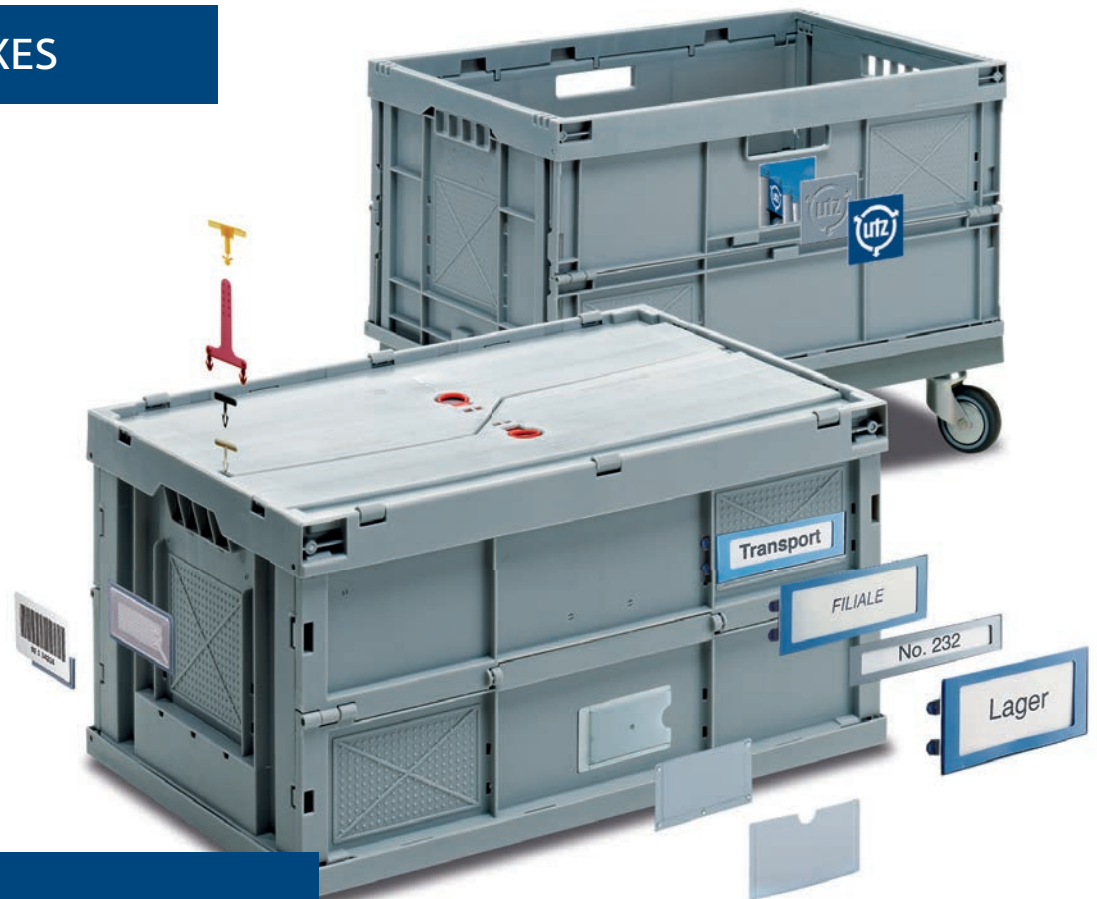
Two-piece lid, hinged on the short side

With a two-part lid, the two lid halves grip into each other. Both halves can be opened again with a gripping flap (see figure) or a gripping hole.

Sliding lid



FOLDABLE BOXES



Accessories

Identification

- Barcode(frame)
 - Transponder/RFID-Chips
 - Inmould label
- Can be positioned individually

Label pockets

- With borders on 2 or 3 sides
- For welding on or gluing on

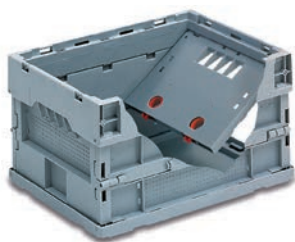
Individual marking

- Hot stamping
 - Pad printing
 - Thermotransfer printing
 - Script inserts
 - Inmould labelling
 - Foil embossing
- For individual models a Template is required.

Seals

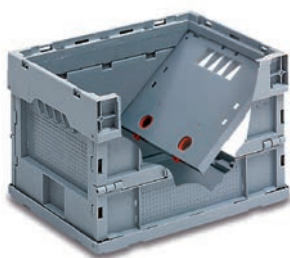
- Wide range of inserted lead seals for sealing foldable boxes

Base dimension **400 x 300 mm**



Height 225 mm

Internal dimensions base		356 x 257 x 217 mm	
Folded height		89 mm	
Usable internal height in stack		204 mm	
Volume		19.0 Liter	
Weight		1.58 kg (without lid)	
Article code	Lid	Base	Locking
34-4322-0	without	solid	circular locking
34-4322-100	2 on the longside	solid	circular locking
34-4322-200	2 on the short side	solid	circular locking
34-4322-10	without	solid	without



Height 260 mm

Internal dimensions base		356 x 257 x 257 mm	
Folded height		89 mm	
Usable internal height in stack		244 mm	
Volume		23.0 Liter	
Weight		2.10 kg (without lid)	
Article code	Lid	Base	Locking
34-4326-0	without	solid	circular locking
34-4326-100	2 on the longside	solid	circular locking
34-4326-200	2 on the short side	solid	circular locking
34-4326-10	without	solid	without



Height 300 mm

Internal dimensions base		356 x 257 x 297 mm	
Folded height		89 mm	
Usable internal height in stack		284 mm	
Volume		26.0 Liter	
Weight		1.80 kg (without lid)	
Article code	Lid	Base	Locking
34-4330-0	without	solid	circular locking
34-4330-100	2 on the longside	solid	circular locking
34-4330-200	2 on the short side	solid	circular locking
34-4330-10	without	solid	without

FOLDABLE BOXES

Base dimension **600 x 400 mm**



Height 225 mm

Internal dimensions base		556 x 356 x 217 mm	
Folded height		72 mm	
Usable internal height in stack		204 mm	
Volume		42.0 litres	
Weight		2.36 kg (without lid)	
Article code	Lid	Base	Locking
34-6422-0	without	solid	circular locking
34-6422-100	2 on the longside	solid	circular locking
34-6422-200	2 on the short side	solid	circular locking
34-6422-10	without	solid	without

Height 260 mm

Internal dimensions base		556 x 356 x 257 mm	
Folded height		72 mm	
Usable internal height in stack		244 mm	
Volume		49.0 litres	
Weight		2.80 kg (without lid)	
Article code	Lid	Base	Locking
34-6426-0	without	solid	circular locking
34-6426-100	2 on the longside	solid	circular locking
34-6426-200	2 on the short side	solid	circular locking
34-6426-10	without	solid	without

Height 280 mm

Internal dimensions base		556 x 356 x 277 mm	
Folded height		72 mm	
Usable internal height in stack		264 mm	
Volume		52.0 litres	
Weight		2.80 kg (without lid)	
Article code	Lid	Base	Locking
34-6428-51	without	solid	without
34-6428-151	2 on the longside	solid	without
34-6428-251	2 on the short side	solid	without
34-6428-10	without	solid	without

Height 280 mm

Internal dimensions base		535 x 357 x 257 mm	
Folded height		95 mm	
Usable internal height in stack		242 mm	
Volume		46.0 litres	
Weight		3.40 kg	
Article code	Lid	Base	Locking
40-6410	without	ribbed base	without
40-6410-10	without	solid	without

Base dimension **600 x 400 mm**



Standard colour
light grey



Standard colour
light grey



Height **300 mm**

Internal dimensions base		552 x 358 x 297 mm	
Folded height		78 mm	
Usable internal height in stack		288 mm	
Volume		59.0 litres	
Weight		2.90 kg (without lid)	
Article code	Lid	Base	Locking
34-6430N-0	without	solid	rectangular locking
34-6430N-100	2 on the longside	solid	rectangular locking
34-6430L-1	without	solid	without
34-6430L-101	2 on the longside	solid	without

Height **300 mm**

Internal dimensions base		559 x 365 x 288 mm	
Folded height		78 mm	
Usable internal height in stack		279 mm	
Volume		59.0 litres	
Weight		2.80 kg (without lid)	
Article code	Lid	Base	Locking
34-6430L-0	without	ribbed	without
34-6430L-100	2 on the longside	ribbed	without
34-6430L-200	2 on the long side	ribbed	rectangular locking
34-6430L-201	without	ribbed	rectangular locking

Lid as a set to fit foldable boxes 34-6430N and 34-6430L

Article code	Model
34-6402-1000	2 half lids that hinge on the longside walls and 8 hinge parts
34-6402-1	single half lid part
34-6402-900	hinge part

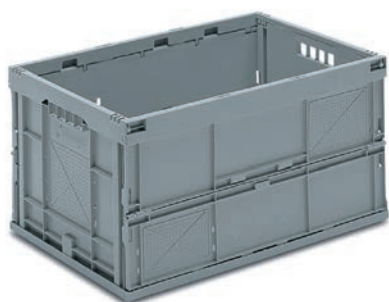
Height **320 mm**

Internal dimensions base		556 x 356 x 312 mm	
Folded height		80 mm	
Usable internal height in stack		298 mm	
Volume		60.0 litres	
Weight		3.90 kg	
Article code	Lid	Base	Locking
34-6432-737	2 on the short side	solid	rectangular locking

Stock items (SKU), for all other items please request the minimum order quantities.

FOLDABLE BOXES

Base dimension **600 x 400 mm**



Height **320 mm**

Internal dimensions base		556 x 357 x 315 mm	
Folded height		59 mm	
Usable internal height in stack		298 mm	
Volume		63.0 litres	
Weight		2.80 kg	
Article code	Lid	Base	Locking
34-6432-32	without	solid	without



Height **320 mm**

Internal dimensions base		567 x 367 x 304 mm	
Folded height		59 mm	
Usable internal height in stack		298 mm	
Volume		63.0 litres	
Weight		2.85 kg	
Article code	Lid	Base	Locking
34-6432-49	without	ribbed	without



Height **320 mm**

Internal dimensions base		556 x 356 x 317 mm	
Folded height		90 mm	
Usable internal height in stack		309 mm	
Volume		60.0 litres	
Weight		3.34 kg	
Article code	Lid	Base	Locking
104-6432-11	2 on the longside	solid	by closing the half lids

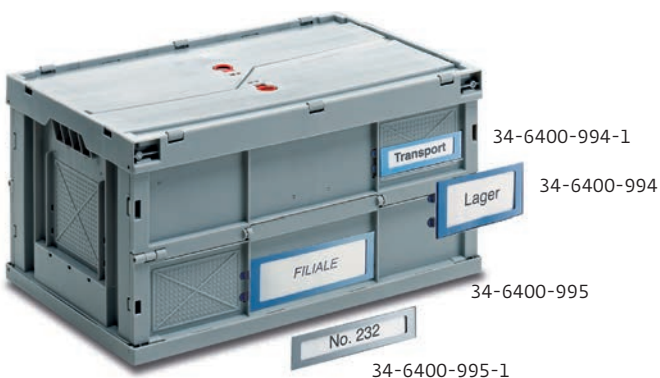
Lids for foldable boxes



Standard colours

	dark grey
	light blue

Accessories



Slip lid

Article code	For base dimension	Model
3-925-5	600 x 400 mm	

Loose lid

Article code	For base dimension	Model
3-214Z-0	400 x 300 mm	
3-213Z-0	600 x 400 mm	

Lids as a set

Article code	For base dimension	Model
34-6402-1000	600 x 400 mm	hinged on the long sides, to fit foldable boxes 34-6430N and -L and its variants

Half lid with opening flap, short sides

Article code	For base dimension	Model
34-4301-21	400 x 300 mm	hinged on the short sides
34-6401-21	600 x 400 mm	hinged on the short sides, to fit only foldable boxes 34-6422-0 and 34-6426-0

Half lid with opening flap, long sides

Article code	For base dimension	Model
34-4301-11	400 x 300 mm	hinged on the long sides
34-6401-11	600 x 400 mm	hinged on the long sides, to fit only foldable boxes 34-6422-0 and 34-6426-0

Label frames

Article code	For base dimensions	To fit foldable boxes
34-6400-994-1	152 x 45 mm	from 225 mm height
34-6400-994	154 x 78 mm	from 260 mm height
34-6400-995-1	214 x 45 mm	from 225 mm height
34-6400-995	213 x 80 mm	from 225 mm height

Stock items (SKU), for all other items please request the minimum order quantities.



*We are a climate-neutral company.
Discover more under www.utzgroup.com*

