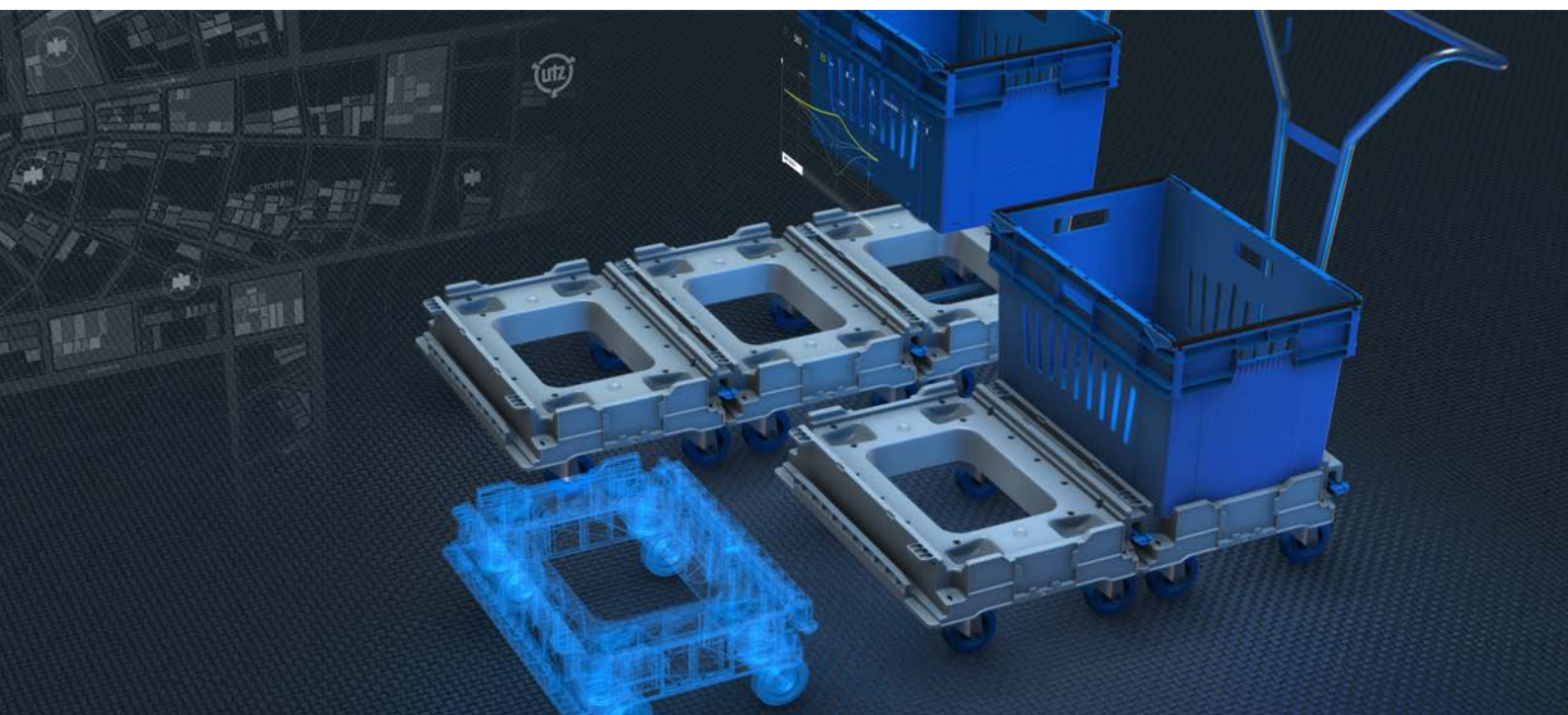


clever – creative – sustainable – smart



Dollies

utzgroup.com

DOLLIES



Simply moving

Heavy loads made easy

Often, heavily laden plastic containers have to be transported manually within a company due to internal operational procedures. On our load-bearing transport dollies, loads of several hundred kilos can be transported quickly and easily.



Stackable dollies

Depending on the model, the dollies can be safely stacked on top of each other. These dollies, for example, can be nested after a 90° turn.

They'll get it rolling

We only use high quality safety casters for our dollies. Casters with other diameters, made of other materials and with or without brake are available on request.



Base dimension **400 x 300 mm**Standard colour
light greyArea load up to **100 kg**

External dimensions	380 x 280 x 135 mm	
Ground clearance	100 mm	
Weight	2.28 kg	
Material	plastic	
Article code	Casters	Ø
80-270-0	4 steering casters, thereof 1 with brake	75 mm
80-270-20	4 steering casters, thereof 1 with brake	100 mm
80-270-40	4 steering casters, thereof 1 with brake	125 mm

Base dimension **400 x 400 mm**Area load up to **100 kg**

External dimensions	400 x 400 x 120 mm	
Ground clearance	105 mm	
Weight	4.50 kg	
Material	metal, galvanised	
Article code	Casters	Ø
80-168-1	4 steering casters	75 mm

Base dimension **600 x 400 mm**Standard colour
dark blueArea load up to **120 kg**

External dimensions	615 x 415 x 165 mm	
Ground clearance	64 mm	
Weight	2.90 kg	
Material	plastic ABS	
Article code	Casters	Ø
80-50-20.1	4 steering casters with rubber tyre, thereof 1 with brake	100 mm
80-50-70 INOX	4 polyamid steering casters, thereof 1 with brake (metal parts INOX)	100 mm

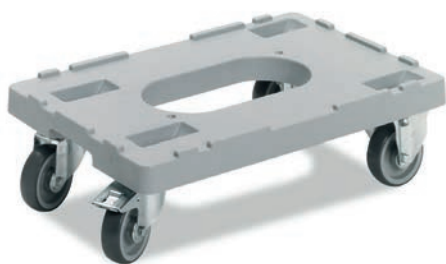


The dollies can be stacked on top of each other after a 90° rotation.

Stock items (SKU), for all other items please request the minimum order quantities.

DOLLIES

Base dimension **600 x 400 mm**



Standard colour
light grey



The dollies can be stacked over recesses for the casters in the upper deck.



Standard colour
dark grey

Area load up to **400 kg**

External dimensions	600 x 400 x 172 mm	
Ground clearance	122 mm	
Weight	4.30 kg	
Material	plastic	
Article code	Casters	Ø
80-55-26	2 fixed and 2 steering casters with rubber tyres, thereof 1 with brake	100 mm
80-55-20	4 steering casters with rubber tyres, thereof 1 with brake	100 mm
80-55-21	4 steering casters with rubber tyres	100 mm
80-55-46	2 fixed and 2 steering casters with rubber tyres, thereof 1 with brake	125 mm

Area load up to **150 kg**

External dimensions	586 x 386 x 135 mm	
Ground clearance	95 mm	
Weight	2.70 kg	
Material	plastic	
Article code	Casters	Ø
80-156-0	4 steering casters, thereof 1 with brake	75 mm
80-156-20	4 steering casters, thereof 1 with brake	100 mm
80-156-40	4 steering casters, thereof 1 with brake	125 mm
80-156-21	4 steering casters	100 mm

Stock items (SKU), for all other items please request the minimum order quantities.

Base dimension **600 x 400 mm**



Standard colour
dark grey



In larger quantities the dolly is also available in stainless steel.



Area load up to **150 kg**

External dimensions	582 x 382 x 136 mm
Ground clearance	95 mm
Weight	3.14 kg
Material	plastic

Article code	Casters	Ø
80-151-0	4 steering casters, thereof 1 with brake	75 mm
80-151-20	4 steering casters, thereof 1 with brake	100 mm
80-151-40	4 steering casters, thereof 1 with brake	125 mm
80-151-61	4 polyamid steering casters	75 mm

Area load up to **150 kg**

External dimensions	582 x 382 x 135 mm
Ground clearance	105 mm
Weight	4.90 kg
Material	metal, galvanised

Article code	Casters	Ø
80-171-0	4 steering casters, thereof 1 with brake	75 mm
80-171-20	4 steering casters, thereof 1 with brake	100 mm
80-171-40	4 steering casters, thereof 1 with brake	125 mm
80-171-61	4 polyamid steering casters	75 mm

Area load up to **200 kg**

External dimensions	600 x 400 x 120 mm
Ground clearance	88 mm
Weight	2.60 kg
Material	plastic

Article code	Casters	Ø
80-185-52	4 steering casters	75 mm

Area load up to **150 kg**

External dimensions	618 x 418 x 505 mm
Usable space lower tier	610 x 410 x 425 mm
Ground clearance	105 mm
Weight	12.40 kg
Material	metal, galvanised

Article code	Casters	Ø
80-175-1	4 steering casters	75 mm

Stock items (SKU), for all other items please request the minimum order quantities.

DOLLIES

Base dimension **600 x 400 mm**



Area load up to **150 kg**

External dimensions		580 x 380 x 880 mm
Ground clearance		105 mm
Weight		7.00 kg
Material		metal, galvanised
Article code	Casters	Ø
80-111-1	4 steering casters	75 mm



utz **DOLLYFIX**

Connectable dollies

Area load up to **250 kg**

External dimensions		600 x 462 x 230 mm	
Ground clearance		120 mm	
Weight		13.60 kg (with push bar) 6.20 kg (without push bar)	
Material		plastic / metal (push bar)	
Article code	Casters	Ø	Model
80-57-T41H	4 steering casters, thereof 1 with brake	100 mm	with push bar
80-57-41AA	4 steering casters	100 mm	without push bar

The dollies can be stacked over recesses for the casters in the upper deck.

The lock is released by pressing the foot pedal.



Stock items (SKU), for all other items please request the minimum order quantities.

Base dimension **800 x 600 mm**Standard colour
black

The dollies can be stacked
over recesses for the casters
in the upper deck.

Area load up to **500 kg**

External dimensions	803 x 603 x 201 mm	
Ground clearance	120 mm	
Weight	7.20 kg	
Material	plastic	
Article code	Casters	Ø
80-184-185 R	2 fixed and 2 steering casters	125 mm
80-184-186 R	2 fixed and 2 steering casters, thereof 1 with brake	125 mm
80-184-41 R	4 steering casters	125 mm

Area load up to **300 kg**

External dimensions	733 x 498 x 185 mm	
Ground clearance	150 mm	
Weight	13.40 kg	
Material	metal, galvanised	
Article code	Casters	Ø
80-172-4	4 steering casters, thereof 1 with brake	125 mm

Area load up to **300 kg**

External dimensions	814 x 621 x 185 mm	
Ground clearance	150 mm	
Weight	13.60 kg	
Material	metal, galvanised	
Article code	Casters	Ø
80-912	4 steering casters, thereof 1 with brake	125 mm

Base dimension **1200 x 800 mm**Standard colour
black

The dolly can be stacked over
recesses for the casters in
the upper deck.

Area load up to **500 kg**

External dimensions	1200 x 800 x 200 mm	
Ground clearance	120 mm	
Weight	16.00 kg	
Material	plastic	
Article code	Casters	Ø
80-954-85	2 fixed and 2 steering casters	125 mm

DOLLIES

Base dimension **815 x 670 mm**



Standard colour
red brown

Distribution dolly (complete set)

Area load up to 300 kg	
External dimensions with frame	815 x 670 x 1633 mm
Ground clearance	150 mm
Weight	21.00 kg (incl. frame)
Material	plastic / metal, galvanised
Article code	Set consisting of
80-002	distribution dolly, 2 frames, 2 textile straps (the set is delivered unmounted)

Dolly

Area load up to 300 kg		
External dimensions	815 x 670 x 183 mm	
Usable internal dimensions	806 x 606 mm	
Ground clearance	150 mm	
Weight	8.10 kg	
Material	plastic	
Article code	Casters	Ø
80-200-105	2 fixed and 2 steering casters	100 mm
80-200-105.5004	2 fixed and 2 steering smooth running casters	100 mm

Frame for side walls

Usable height	1450 mm
Material	metal
Article code	Execution
89-15-1.1	Mounting clip for fastening to the dolly

Frame for rear wall

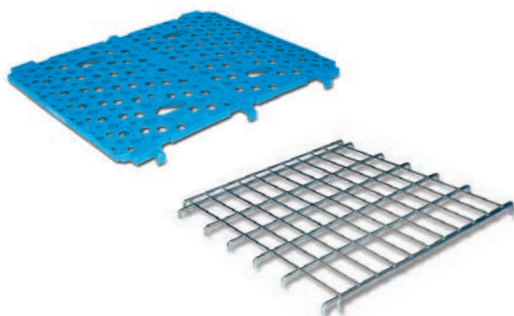
Usable height	1500 mm
Material	metal
Article code	Execution
89-15-9	

Textile strap

Dimension	830 x 25 mm
Material	polyester
Article code	Execution
89-11-200	

Intermediate base

Area load	150 kg
Article code	Execution
89-3-15	plastic, not suitable in combination with rear frame 89-15-9
89-15-10	metal grid



Stock items (SKU), for all other items please request the minimum order quantities.



*We are a climate-neutral company.
Discover more under www.utzgroup.com*

