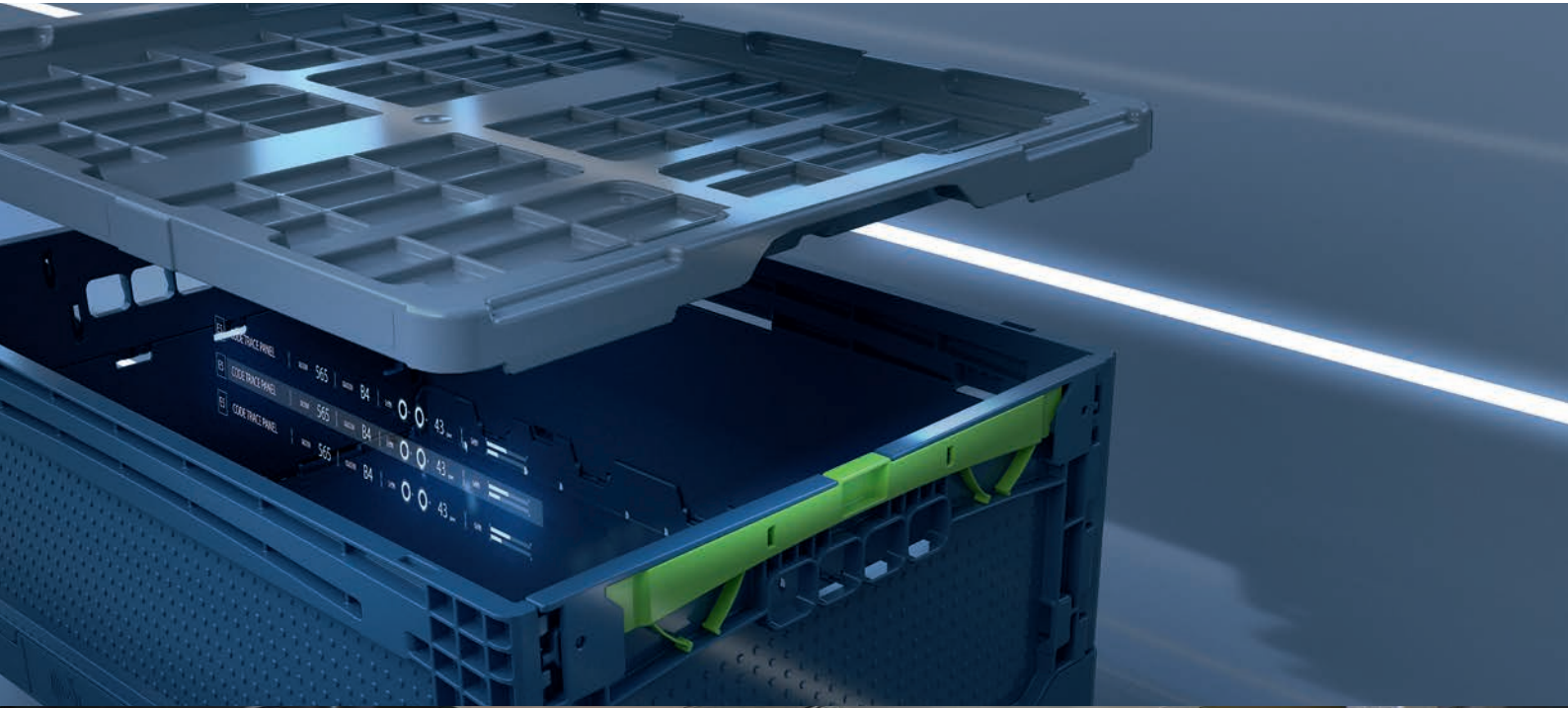


*clever – creative – sustainable – smart*



## Individual customer solutions

[utzgroup.com](https://utzgroup.com)

### Not a regular job

#### *A solution for every task*

Sometimes, tasks based on individual customer requirements can be solved by the modification of standard containers. However, they often require totally new ideas and solutions.

#### *Box for the transport of ball bearings*

High-quality ball bearings of various sizes are transported in this re-usable container. Individually adjustable eccentric elements are used to fit the ball bearings securely into the container.



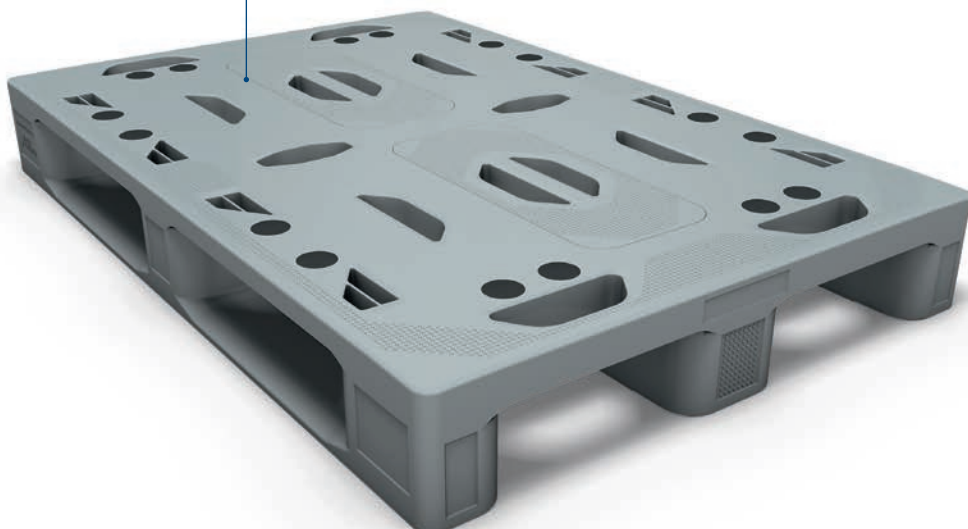
#### *EUROTEC with dividers*

This EUROTEC 600 x 400 x 220 mm has grooves injected into the internal walls of the longitudinal sides, which are able to incorporate dividers, if necessary.



#### *UPAL-P as a pool pallet*

The UPAL-P euro pallet has been specially developed for automation processes. The pallet used in a pool system is equipped with RFID transponders, Data-Matrix and barcodes so that data can be captured and transmitted in real time. It can be stored in the high rack. It is also easy to clean.



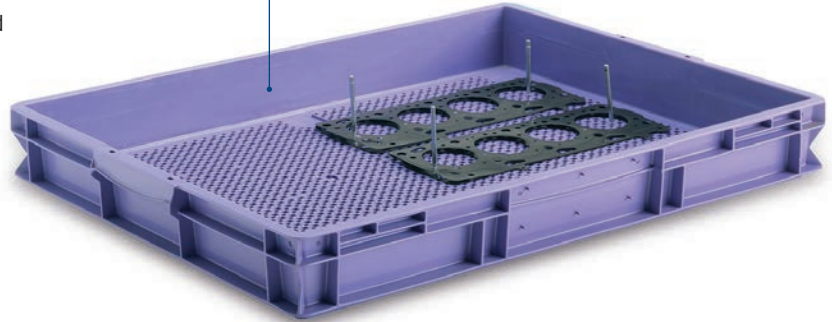
DEUTSCHER  
VERPACKUNGS  
PREIS 2015



GERMAN  
DESIGN  
AWARD  
SPECIAL  
2017

## Container for gaskets

This container is used to transport cylinder head gaskets for engines by inserting a base with holes into a RAKO. Steel pins matching the openings in the gaskets are inserted into the ground with the gaskets placed on top.



## Engine frame

A simple solution for transporting cylinder heads to the assembly line: the parts are placed onto the free layer of the frame and locked with stoppers. The cylinder heads are removed at the assembly line and de-stacked layer by layer. The entire unit is placed on a UPAL-H ISO pallet.



DEUTSCHER  
VERPACKUNGS  
PREIS 2015



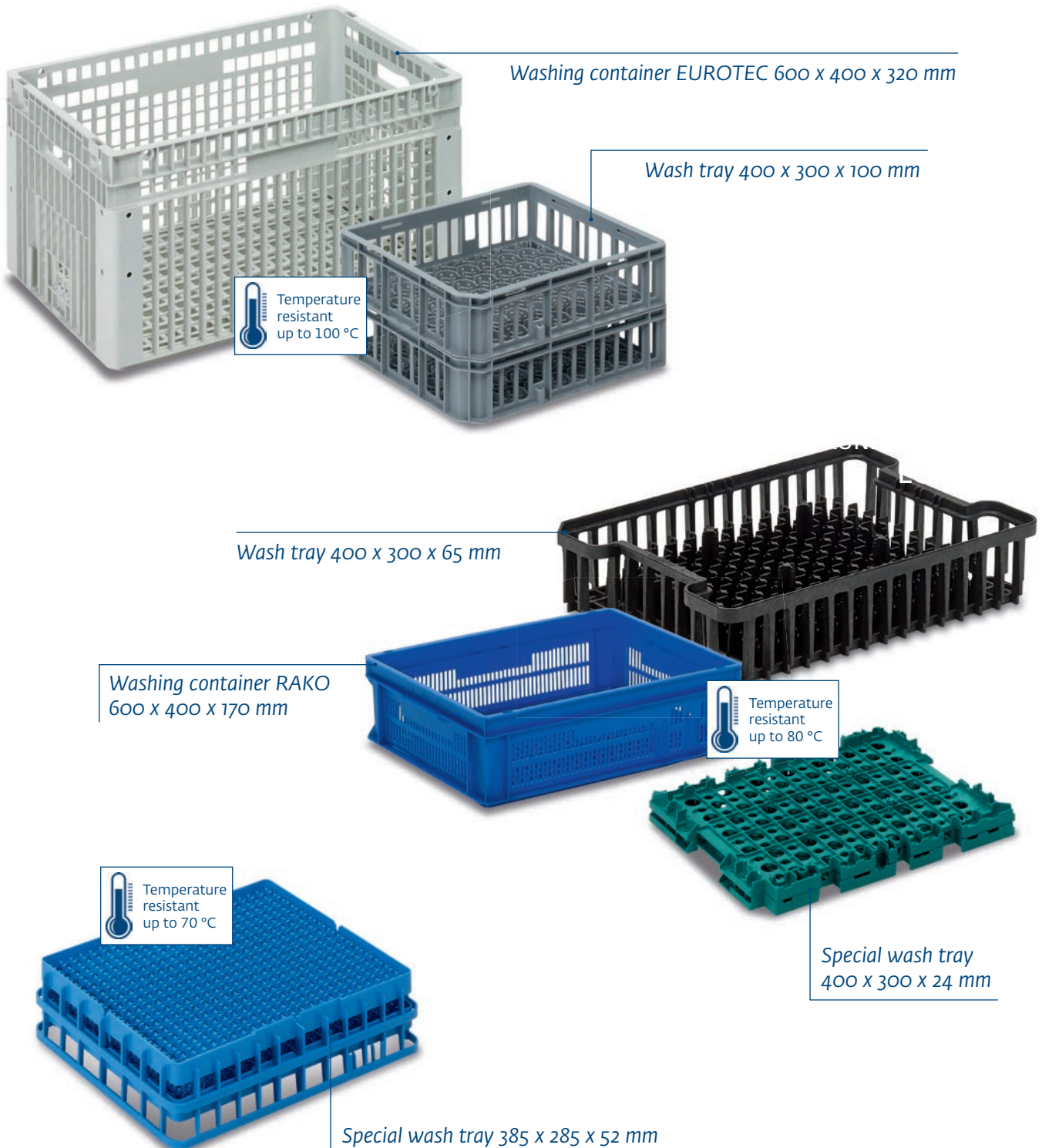


### Washing baskets

#### *Containers for chemical cleaning*

Technical parts are cleaned in washing baskets, exposed to high temperature up to 100 degrees, immersed in a chemical bath or stressed in other ways. In the past, this could often only be solved with metal containers which are usually heavy and in any case difficult to handle.

There are now sophisticated plastic containers which are superior to their corresponding metal counterparts, regardless of the fact that they are significantly lighter and easier to handle.



## Transport units

### *System solutions*

It is often necessary to combine individual packaging solutions and form transport units from them. Not only containers are stacked on pallets, but often very individual packaging units required for special circumstances. Here are a few examples from practical experience.

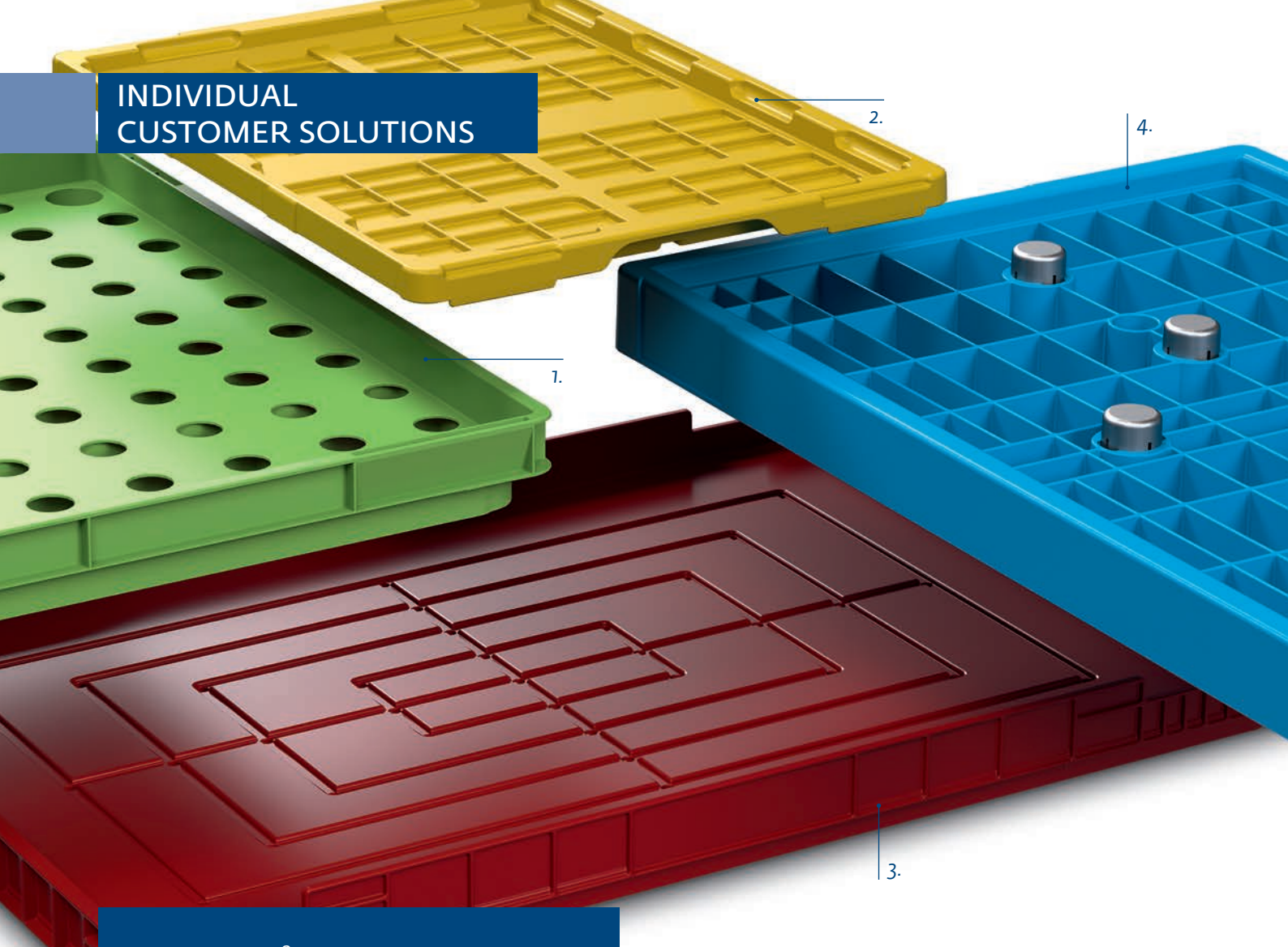


### *Transport unit from Euro pallet, stacking frame and cover*

The stacking frames for pallets can be stacked one on top of the other and so form a transport unit at any height. If not needed or returned, the frames can be folded together.



## INDIVIDUAL CUSTOMER SOLUTIONS



### 1. 700 x 500 x 48 mm

This tray is suitable for internal storage and automatic handling of various merchandise. With excavation shafts for lifting the conveyed goods.

### 2. 405 x 305 x 48 mm

Tray for automatic and manual handling and transport of different thermoformed containers.

### 3. 640 x 420 x 50 mm

For automatic handling and transport of cardboard boxes and other containers. With a drainage floor for a water drain also in the loaded condition.

### 4. 600 x 400 x 55 mm

Shelf with spring-loaded locking domes for handling cardboard boxes, EUROTEC and VDA-KLT in various sizes.

## Trays – containers without sidewalls

### *Goods carriers for automated handling*

Especially in the automated warehouses of large mail-order companies, a large number of goods are delivered in very different packaging. In most cases, these packages are not suitable for conveyor systems. Repacking in suitable plastic containers is completely unthinkable for economic reasons, but also for reasons of time. Therefore the incoming parcels are sorted on trays which are suitable for automatic conveyor systems. Depending on the products to be transported and the conveyor systems used, each tray is an individual customer solution. Here are a few examples:

405 x 305 x 20 mm

Tray for handling of small thermoformed containers of various sizes.



400 x 300 x 55 mm

Tray for handling C-KLT containers 400 x 300 mm and 300 x 200 mm.



600 x 400 x 50 mm

Tray with openings for a lifting device for the handling of packages and containers



630 x 430 x 60 mm

Tray for the handling of cardboard packaging in the picking area, reinforcement through internal ribbing.





*600 x 400 x 75 mm*

Tray for the handling of cardboard packaging in the picking area, reinforcement through internal ribbing.



*630 x 430 x 80 mm*

Tray for the handling of cardboard packaging in the picking area, reinforcement through internal ribbing.



*650 x 430 x 59 mm*

Tray with 14 openings for a lifting device for the handling of packages and containers.



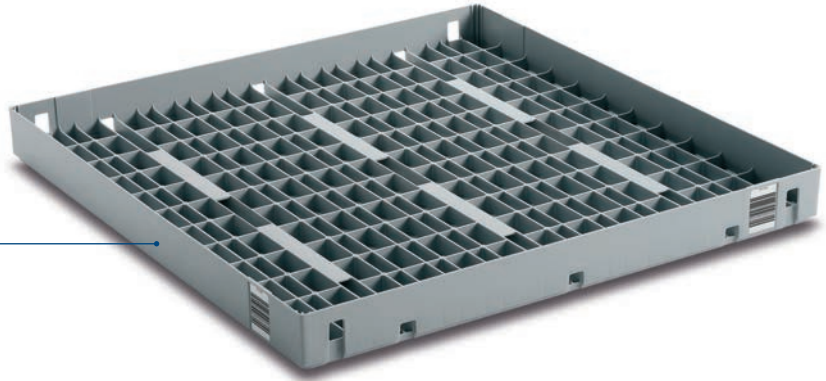
*640 x 440 x 77 mm*

Tray with vertically movable inner plate for the automatic push off of cardboard packagings.



*800 x 800 x 95 mm*

Tray for holding cardboard packaging in the picking area, reinforcement of the tray possible using steel tubes.



*1220 x 1016 x 45 mm*

Double tray to lock together for the handling of frozen foods in deep-freeze storage at up to -25 °C.



*1300 x 900 x 64 mm*

Tray for the internal transport and storage of cardboard packaging; the integrated pulling device enables the ergonomic picking of remote cardboard packaging.





### *Subdivisions using paper bags*

Up to three paper bags can be hung into the notches in the upper edge.

## Homeshopping with ingenious container solutions

### *Plastic containers for order picking and transport*

While home shopping is still in its infancy in Switzerland, it is widespread in France and England, for example, and is part of everyday life. The central element in order picking in the warehouse and during transport to the customer or back to the warehouse is a container optimally adapted to the logistics concept. Although every company involved in home shopping is looking for an individually tailored solution, nestable containers

are used in many cases. These tapered plastic boxes are nested inside each other when empty, so that up to 70 % space savings are possible when returning the containers. The upper edge of the boxes is provided with notches into which up to three paper bags can be hung. The goods ordered online are picked in the paper bags and then handed over to the customer at the front door. The empty container is then taken back with it.

*A clever concept...*

Nestable containers for home shopping, can be nested when empty and stacked using fold-out bail arms.





### Homeshopping with DOLLYFIX

#### *Flexibly combinable transport system*

The food ordered online is stored in a warehouse and picked manually in containers. The containers have a conical design and can be nested when empty, saving more than 70 % of space. The filled boxes can be stacked on fold-out bail arms.

In order to be able to deliver the ordered food to the front door as quickly as possible, the products are placed in paper bags whose carrying handles can be hung in openings at the top edge of the boxes for better handling. Several orders are processed simultaneously so that different online orders can be picked more effectively. Employees walk through the warehouse with several different „shopping slips“ and pick the same food into

different plastic containers. So that these containers do not have to be carried through the warehouse by hand during the „shopping tour“, they are placed on a DOLLYFIX, so there is one dolly per order. The empties for the individual orders are on the first DOLLYFIX, which is equipped with a hanger for easier handling. In order to remain flexible, the individual DOLLYFIX can be connected to each other via a rail and theoretically combined as desired.

Once the online orders have been picked, the entire train with all boxes can be pushed to the dispatch point within the warehouse.

#### *Practically*

Stacking of the nestable transport containers via fold-out bail arms.

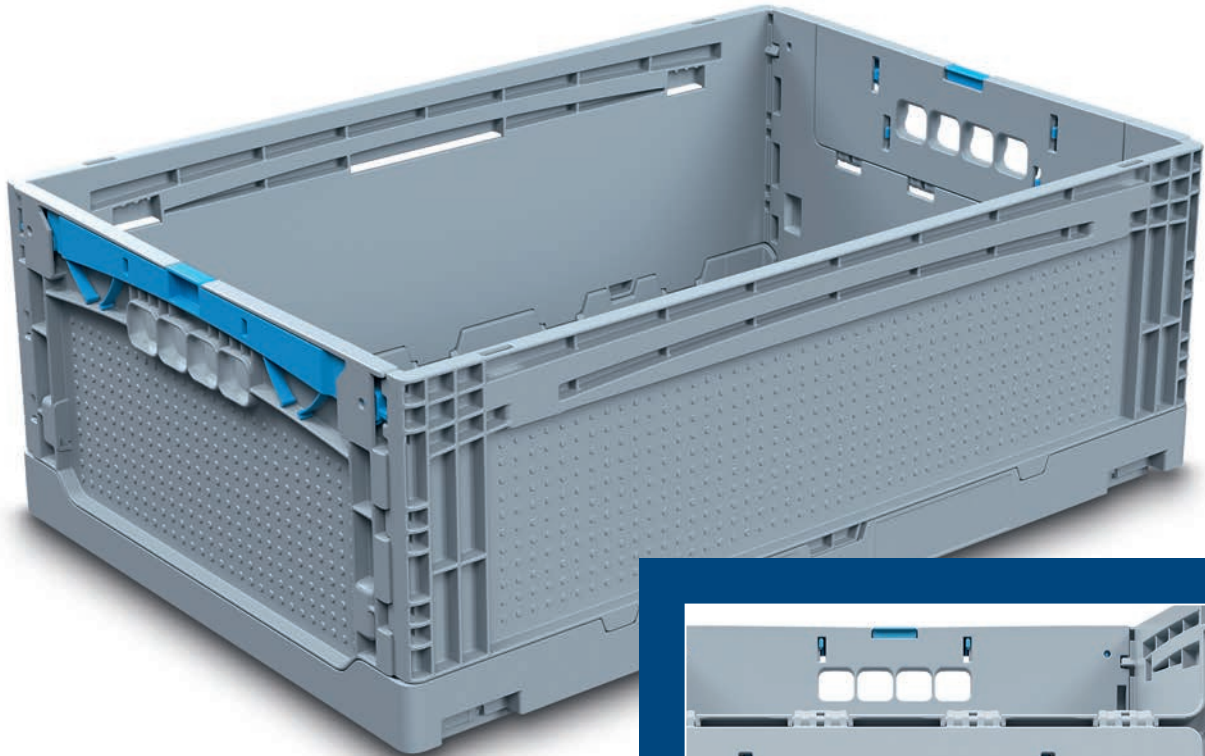
#### *Thoughtful*

Combination of nestable containers and dollies, which can be flexibly combined with each other depending on the scope of the order.

#### *Easy to handle*

Dollies that can be connected to each other for an ergonomically easy transport of the containers. Brackets for pushing or pulling the whole train.





## utz2FOLD

### *One for all.*

When it comes to storage and transport boxes, everyone does what they want: each has its own box, which results in a lot of superfluous handling and extensive accounting for the empties. So why not develop a plastic box that combines all your wishes? The Utz2Fold folding box is one such container on which a number of large trading companies have agreed: A clever box that meets all the requirements of retail logistics.

The Utz2Fold 600 x 400 mm is available with flaps on the short sides and the 400 x 300 mm with flaps on the long sides. In the stack, only the side flap of the top container can be opened. The lower containers remain protected against unauthorised access.

You also have the choice between the Utz2Fold with struts in high-tech design and the Utz2Fold with smooth side walls everywhere.



*With a single grip...*

.... unlocking the sidewall



*With a single grip...*

.... unlocking the side flap



*Stable and strong.*

With double base.



*We are a climate-neutral company.  
Discover more under [www.utzgroup.com](http://www.utzgroup.com)*



**utzgroup.com**

Georg Utz AG • Augraben 2-4 • 5620 Bremgarten • Switzerland  
Phone +41 56 648 77 11 • [info.ch@utzgroup.com](mailto:info.ch@utzgroup.com) • [www.utzgroup.com](http://www.utzgroup.com)