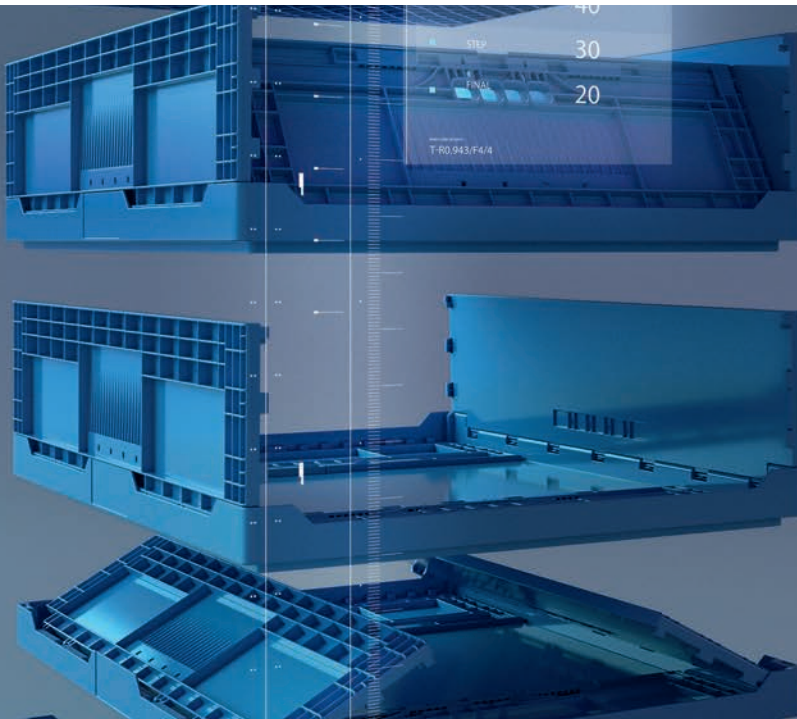


clever – creative – sustainable – smart



Collapsible boxes

COLLAPSIBLE BOXES

Flaps are part of the trade

Space saving made easy

Empty folding crates can be reduced to up to 20 % of their original size. Therefore, these space-saving containers are especially suitable for transport operations involving empty folding crates which must be taken back after previous deliveries.

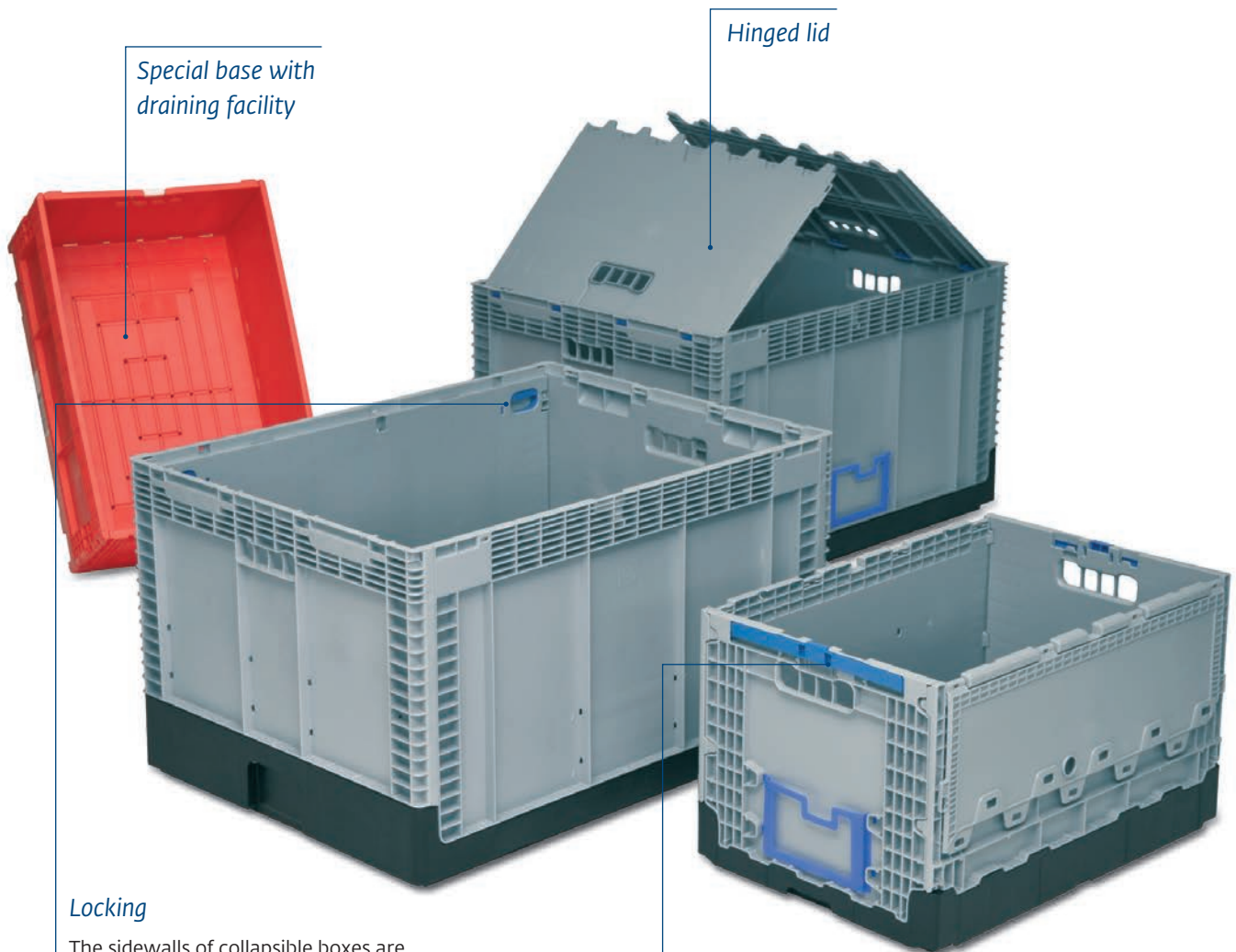
A maximum of five times as many empty collapsible boxes can be stored on the same floor space than would be possible with rigid containers. This allows the transport costs to be reduced accordingly.



Collapsing system

By opening the spring-closures, the sidewalls can be collapsed together.

Container variants



Special base with draining facility

Hinged lid

Locking

The sidewalls of collapsible boxes are joined together by a lock on the upper edge. By shifting this mechanism, the sidewalls are unlocked and can then be collapsed together.

Lightweight lock

By applying light pressure to a plastic spring mechanism, the lock on the box opens and the sidewalls can be placed on top of one another.



Enclosed double base

Ribbed base

Solid base

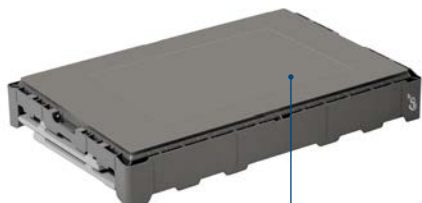
Special base with draining facility

COLLAPSIBLE BOXES

Base dimension **600 x 400 mm**



Standard colour
light grey



Height 285 mm

Internal dimensions base		560 x 358 x 214 mm	
Collapsed height		72 mm	
Usable internal height in stack		60 mm	
Volume		55 litres	
Weight		3.10 kg	
Article code	Lid	Base	Handles
34-6280	without	special base with water drainage holes	2 handle slots

Height 355 mm

Internal dimensions base		558 x 358 x 352 mm	
Collapsed height		89 mm	
Usable internal height in stack		324 mm	
Volume		71.5 litres	
Weight		without lid 3.32 kg / with lid 4.19 kg	
Article code	Lid	Base	Handles
34-64-355-100	without	ribbed	2 handle slots
34-64-355-102	without	solid	2 handle slots
34-64-355-200	2 on the long side	ribbed	2 handle slots
34-64-355-202	2 on the long side	solid	2 handle slots

Height 400 mm

Internal dimensions base		567 x 367 x 389 mm	
Collapsed height		89 mm	
Usable internal height in stack		369 mm	
Volume		81 litres	
Weight		without lid 3.75 kg / with lid 4.38 kg	
Article code	Lid	Base	Handles
34-64-400-100	without	ribbed	2 handle slots
34-64-400-102	without	solid	2 handle slots
34-64-400-200	2 on the long side	ribbed	2 handle slots
34-64-400-202	2 on the long side	solid	2 handle slots

The collapsible boxes 34-64-355-... and 34-64-400-... are also available with an enclosed double base.

Half-lid

Article code	Model
34-64-000-080	1 half-lid lengthwise to fit 34-64-355 and 34-64-400

Stock items (SKU), for all other items please request the minimum order quantities.

Base dimension **800 x 600 mm**



Standard colour
light grey



Collapsible frame



The frame can be ordered
with 2 half-lids.

Height 465 mm

Internal dimensions base	760x 560 x 450 mm
Collapsed height	120 mm
Usable internal height in stack	452 mm
Volume	192 litres
Weight	without lid 7.00 kg / with lid 8.32 kg

Article code	Lid	Base	Support for label holder	Handles
34-8646-100-0	without	ribbed	without	2 shell handles
34-8646-101-0	without	ribbed	with	2 handle slots
34-8646-150-0	2 on the short side	ribbed	without	2 shell handles
34-8646-151-0	2 on the short side	ribbed	with	2 handle slots

Box with reinforced base

Weight	without lid 7.56 kg / with lid 8.88 kg
--------	--

Article code	Lid	Base	Support for label holder	Handles
34-8646-100-V	without	partially double	without	2 shell handles
34-8646-101-V	without	partially double	with	2 handle slots
34-8646-150-V	2 on the short side	partially double	without	2 shell handles
34-8646-151-V	2 on the short side	partially double	with	2 Handle slots

Height 465 mm

Internal dimensions base	760x 560 x 450 mm
Collapsed height	120 mm
Usable internal height in stack	452 mm
Volume	185 litres
Weight	4.70 kg

Article code	Lid	Base	Support for label holder	Handles
34-8646-200-0	without		without	2 shell handles
34-8646-201-0	without		with	2 handle slots

Stock items (SKU), for all other items please request the minimum order quantities.

COLLAPSIBLE BOXES

Collapsible box with runners



The container and the pallet are welded together.

Height 615 mm

Internal dimensions base	760x 560 x 450 mm
Collapsed height	720 mm
Volume	192 litres
Weight	without lid 12.80 kg / with lid 14.12 kg

Article code	Lid	Base	Support for label holder	Handles
34-8646-100-33	without	3 runners	without	2 shell handles
34-8646-101-33	without	3 runners	with	2 handle slots
34-8646-150-33	2 on the short side	3 runners	without	2 shell handles

Accessories



Standard colour
blue

Label frame

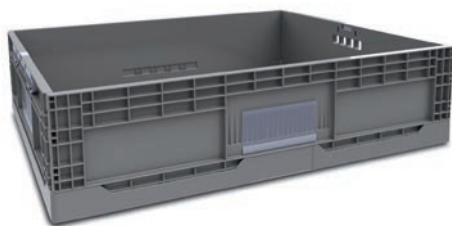
Article code	To fit collapsing boxes
34-950-953	600 x 400 mm on the short wall 800 x 600 mm on the long wall

Dollies



Stock items (SKU), for all other items please request the minimum order quantities.

Base dimension **800 x 600 mm**



Height 220 mm

Internal dimensions base		770x 570 x 205 mm
Collapsed height		50 mm
Volume		90 litres
Weight		4.60 kg
Article code	Base	Handles
9-09014-0220	ribbed	2 handle slots

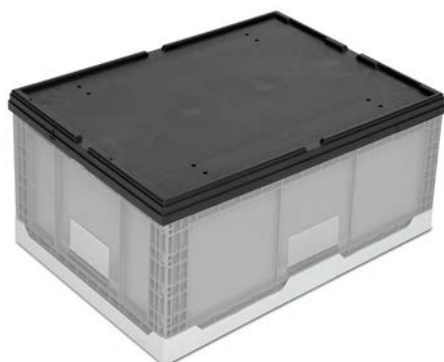


Height 325 mm

Internal dimensions base		770x 570 x 310 mm
Collapsed height		50 mm
Volume		136 litres
Weight		5.50 kg
Article code	Base	Handles
9-09014-0325	ribbed	2 handle slots



Collapsing box with very low height in folded condition.



Lid

Article code	Model
9-9023	loose lid



*We are a climate-neutral company.
Discover more under www.utzgroup.com*



utzgroup.com

Georg Utz AG • Augraben 2-4 • 5620 Bremgarten • Switzerland
Phone +41 56 648 77 11 • info.ch@utzgroup.com • www.utzgroup.com