

clever – creative – sustainable – smart



Pallets

utzgroup.com

PALLETS



Stability at the basis

Plastic or wood?

Plastic pallets are not an economical alternative to wooden pallets.

Plastic pallets, however, have key advantages: they have a constant weight, are robust and durable, have a longer life than wooden pallets and, with metal reinforcing, are particularly sturdy and suitable for use in high-rack warehousing.



If desired, plastic pallets can be produced in a version which is electrically conductive or equipped with a non-slip top deck. Fully enclosed pallets are easy to clean and are particularly suitable for the food, hygiene and clean room sectors. Utz pallets (UPAL) are available as Euro, ISO or half pallets.

Utz pallets load safety

Things can often slip on the smooth upper deck of a pallet. However, there is an anti-slip coating for our pallets:



Elastomeric coating

The elastomer coating on the top deck of the pallet consists of a 2-component polyurethane coating. Therefore, a rubber-like glossy surface with excellent non-slip properties is created.



Elastomer-coated stripes

In this case, the elastomer coating is not applied over the entire surface, but distributed on three strips. An anti-slip effect is only possible, however, when the load is in contact with the elastomer strips.



Grip paint or silica sand

Grip paint and silica sand result in a fine, grainy texture on the top deck of the pallet. Therefore, the pallet maintains particularly good anti-slip properties.

Dim. mm	Pallet	Undersurface		Upper deck											Reinforcement					
		runners	feet	smooth	closed	slotted	EHI-compatible safety edge	interrupted safety edge	continuous safety edge	recessed areas	middle arresting	anti-slip stripes	onboard safety edge	outboard safety edge	edge height 20 mm	none	metal tubes	steel profiles		
800 x 600	UPAL-H	3		•	•											•				
		3			•			•								•				
		3			•			•								•				
800 x 600	UPAL-D	3		•	•											•				
		3		•		•										•				
		3			•			•								•				
		3		•	•			•								•				
812 x 612	UPAL-E	3				•		•							•					
1200 x 800	UPAL-H	3		•	•											•				
		3			•			•								•				
		3			•			•								•		•		
		3		•	•				•							•		•		
		3	9	•	•											•				
		3	9		•				•		•					•		•		
1200 x 800	UPAL-H1	3				•		•							•					
1200 x 800	UPAL-U	3		•	•										•					
1200 x 800	UPAL-I	3		•	•			•								•				
		3			•			•							•					
		3		•	•											•		•		
		3			•			•								•		•		
1200 x 800	UPAL-S	3		•		•										•				
		3			•			•								•				
		3			•		•		•					•		•				
		3		•	•							•				•				
		3			•			•				•				•				
		3		•	•				•			•			•	•				
		3			•			•				•				•				
		3			•				•			•				•		•		
1206 x 806	UPAL-E	3				•		•							•					
3				•										•						
1200 x 1000	UPAL-H	3		•	•											•				
		3			•			•								•				
		3		•	•			•								•		•		
		3			•			•								•		•		
		3	9	•	•											•				
		3	9	•	•											•		•		
		1200 x 1000	UPAL-I	3		•		•										•		
				3			•			•						•		•		
				5		•		•										•		
				5			•			•								•		
2	3			•		•										•				
2	3					•			•							•				
2	3					•				•						•				
2	3					•				•						•				
2	3					•				•						•				
3				•		•										•		•		
1200 x 1000	UPAL-V	3				•		•							•			•		
		3	9			•		•						•			•			
		3				•		•							•			•		
		4				•		•							•			•		
		4				•		•							•			•		
		4				•		•							•			•		

A comprehensive pallet program

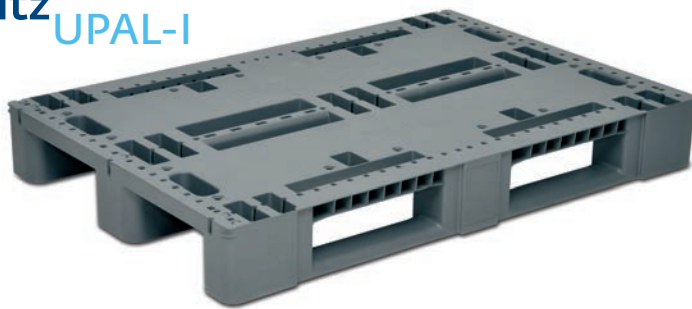
utz UPAL-H



Clean, stable and closed all round

UPAL-H is closed on all sides, is therefore easy to clean and frequently used in the food, hygiene and clean-room segment. Due to its reinforcement with metal profiles, the pallet is suitable for high-bay storage.

utz UPAL-I



Robust, resilient and versatile

The UPAL-I is a robust industrial pallet, which is particularly sturdy in handling and has a very long service life due to its strong construction. Steel profiles can be inserted, if required, making the pallet suitable for high-bay storage. To protect against slipping, anti-slip pins can be attached to the upper deck and the forklift contact area.

utz UPAL-U



Robust, easy to handle and light

The UPAL-U is particularly quiet on roller tracks and is also suitable for high-bay storage due to its steel profiles. The pallet is relatively light, so that it can also be easily carried by its two handles.

utz UPAL-S



Clever, flexible and reinforced, therefore suitable for racking

The UPAL-S is a robust and resilient pallet, with increased stability due to metal profiles, which can be inserted into designated recesses. This reinforcement makes the UPAL-S suitable for high-bay storage. The pallet can be equipped with anti-slip strips.

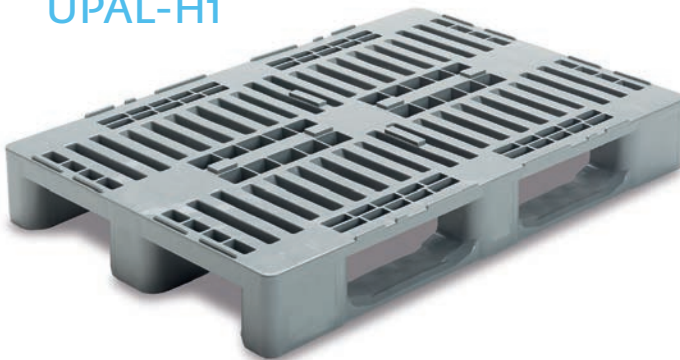
utz UPAL-E



System-compatible and stackable

The advantages of the stackable export pallet UPAL-E are found in its suitability for use on automatic conveyor systems. It is therefore the perfect solution for smooth handling in intralogistics. The UPAL-E offers a usable area of 800 x 600 mm or 1200 x 800 mm and studded fields, as well as a safety rim to secure the load.

utz UPAL-H1



Easy to clean and stable

The UPAL-H1 is easy to clean and is therefore frequently used in the food, hygiene and cleanroom segment.

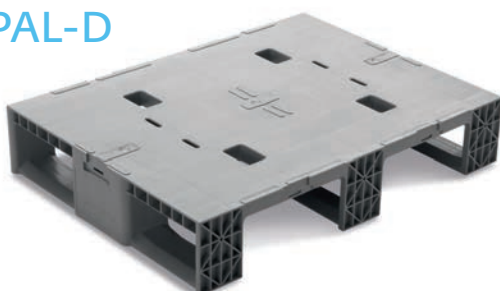
utz UPAL-V



Variable, flexible and adaptable

The UPAL-V can be perfectly adapted to customer requirements: The number of feet, runners and metal reinforcements can be modified depending on customer requests. Optional metal reinforcements provide the UPAL-V with the required stability and resilience. Additionally, the feet, runners and metal bars can be simply and easily replaced.

utz UPAL-D



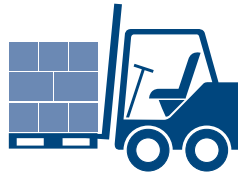
Small, easy to handle and versatile

The display pallet was designed especially for the food sector: Connector systems on the upper deck and on the sides are suitable for the insertion of display boards. The light pallet is also suitable for manual forklifting from all four sides and can also be transported on automatic conveyor systems.

Load types



static

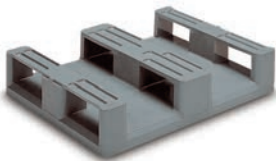


dynamic



racked

Base dimension **800 x 600 mm**



Standard colour
 light grey

utz UPAL-H

3 runners crossways non reinforced

Height	160 mm	
Weight	9.00 kg	
Load bearing capacity* (at 23° C room temperature)	static	3000 kg
	dynamic	750 kg
	racked	500 kg

Article code	Surface
33-8060-630	smooth
33-8060-632	EHI-compatible, onboard safety edge and 4 recessed areas
33-8060-630 R	smooth
33-8060-632 R	EHI-compatible, onboard safety edge and 4 recessed areas
33-8060-636	EHI-compatible, onboard safety edge and EHI anti-skid top deck
33-8060-642	EHI-compatible, onboard safety edge

utz UPAL-D

3 runners crossways non reinforced

Height	150 mm	
Weight	5.90 kg	
Load bearing capacity* (at 23° C room temperature)	static	2000 kg
	dynamic	500 kg
	racked	400 kg

Article code	Surface
33-8060M-0-01	closed, smooth
33-8060M-1-01	4 slots, recessed areas, interrupted onboard safety edge
33-8060M-2-01	closed, interrupted onboard safety edge



Standard colour
 light grey



Article code with R =
made of UIC® recycled material

Stock items (SKU), for all other items please
request the minimum order quantities.

Base dimension **800 x 600 mm**



Standard colour
 dark grey

utz UPAL-D

3 runners crossways

non reinforced

Height		160 mm
Weight		5.50 kg
Load bearing capacity* (at 23° C room temperature)	static	2000 kg
	dynamic	2000 kg
	racked	unsuitable
Article code		Surface
33-8060D-731-10-0	interrupted onboard safety edge, pallet made from recycled material	

reinforced, 2 metal tubes

Height		160 mm
Weight		7.10 kg
Load bearing capacity* (at 23° C room temperature)	static	2000 kg
	dynamic	2000 kg
	racked	500 kg
Article code		Surface
33-8060D-731-12-0	interrupted onboard safety edge, pallet made from recycled material	

Base dimension **812 x 612 mm**



utz UPAL-E

3 runners crossways

non reinforced

Height		145 mm
Weight		3.60 kg
Load bearing capacity* (at 23° C room temperature)	static	400 kg
	dynamic	400 kg
	racked	unsuitable
Article code		Surface
33-8060B-0 R	slotted, onboard safety edge 12 mm	

* The load and the weight may vary depending on the number of tubes and their wall thickness. We recommend that you test the pallet before use.



Article code with R = made of UIC® recycled material

Stock items (SKU), for all other items please request the minimum order quantities.

UPAL-H

Clean, sturdy and completely enclosed

The UPAL-H is completely enclosed, therefore it is easy to clean and is often used in the food, hygiene and clean room sectors.

Metal reinforcement

Inlaid metal tubes inserted in the pallets increase stability. The UPAL-H is therefore suitable for high rack warehousing.



Internal ribbing

Internal ribbing provides the UPAL-H with additional stability.



Lower surface

Completely closed lower surfaces and runners.



The true hygienic pallet comes from Utz!

The University of Applied Sciences Wädenswil/Switzerland (Department of Foodstuffs Microbiology)* has tested the UPAL-H along with some of the most frequently used competitive plastic pallets in an independent test to examine their hygienic quality. All plastic pallets made especially for the food and pharmaceutical industry (with flat and slotted surface) were inoculated at a number of defined points with 6 test micro-organisms (escherichia coli, saccharomyces cerevisiae, aspergillus niger, pseudomonas fluorescens, bacillus cereus spores and staphylococcus capitits) and then cleaned.

* The University of Applied Sciences Wädenswil/Switzerland is a member of the Zurich Association of Universities of Applied Sciences.

Test arrangement

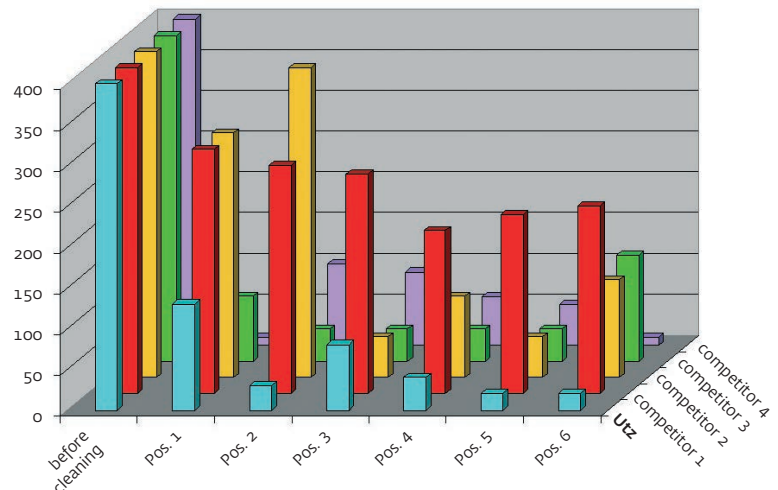
Microbiological investigations were carried out:

- before cleaning
- after cleaning (Pos. 1 - 6)

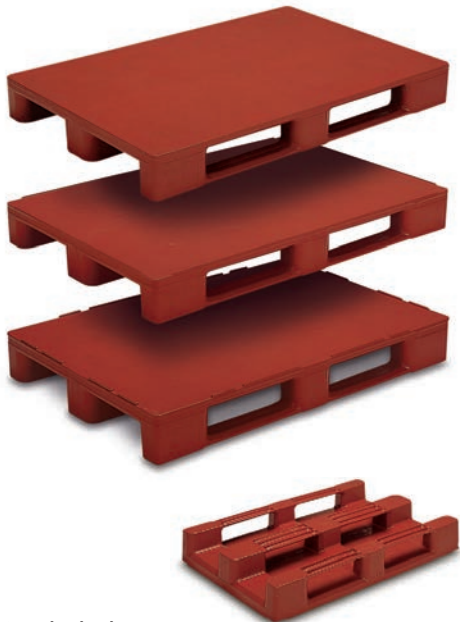


“The cleaning results show that the Utz hygiene pallet shows a better result in comparison with competitive products. This confirms the claim that the Utz UPAL-H is the recommended product for use in sensitive zones in the foodstuffs area”.

(The analysis of the test results is with Georg Utz AG.)



Base dimension **1200 x 800 mm**



Standard colours

- red brown
- dark grey

utz UPAL-H

3 runners lengthwise

non reinforced

Height		160 mm
Weight		15.50 kg
Load bearing capacity* (at 23° C room temperature)	static	6000 kg
	dynamic	1500 kg
	racked	500 kg (support on long side)
500 kg (support on short side)		
Article code		Surface
■ 33-1208N-630-0000 R		smooth
33-1208N-630-0000		smooth
■ ■ 33-1208N-642-0000 R		EHI-compatible, onboard safety edge
33-1208N-642-0000		EHI-compatible, onboard safety edge
33-1208N-643-0100 R		EHI-compatible, onboard safety edge (tare weight 18 kg)

reinforced, 2 metal tubes lengthwise

Height		160 mm
Weight		17.00 kg
Load bearing capacity* (at 23° C room temperature)	static	7500 kg
	dynamic	1500 kg
	racked	500 kg (support on long side)
750 kg (support on short side)		
Article code		Surface
33-1208N-643-0200		EHI-compatible, onboard safety edge

reinforced, 3 metal tubes lengthwise

Height		160 mm
Weight		17.50 kg
Load bearing capacity* (at 23° C room temperature)	static	7500 kg
	dynamic	1500 kg
	racked	500 kg (support on long side)
850 kg (support on short side)		
Article code		Surface
33-1208N-643-0300		EHI-compatible, onboard safety edge

* The load and the weight may vary depending on the number of tubes and their wall thickness. We recommend that you test the pallet before use.

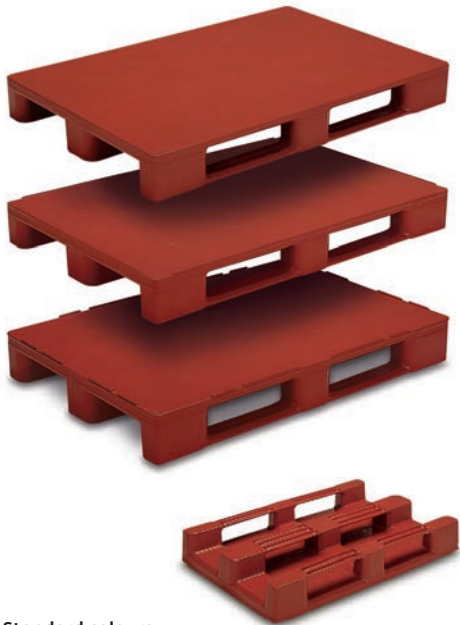


Article code with R = made of UIC® recycled material

Stock items (SKU), for all other items please request the minimum order quantities.

PALLETS

Base dimension **1200 x 800 mm**



Standard colours
 red brown
 natural



utz UPAL-H

reinforced, 3 metal tubes lengthwise and 2 crosswise

Height	160 mm	
Weight	18.50 kg	
Load bearing capacity* (at 23° C room temperature)	static	7500 kg
	dynamic	1750 kg
	racked	1300 kg (support on long side)
1300 kg (support on short side)		
Article code	Surface	
<input checked="" type="checkbox"/> 33-1208N-634-0500 R	smooth	
33-1208N-635-0500 R	continuous, onboard safety edge	
<input checked="" type="checkbox"/> 33-1208N-643-0500 R	EHI-compatible, onboard safety edge	
<input type="checkbox"/> 33-1208N-643-0500	EHI-compatible, onboard safety edge	
33-1208N-643-1500 R	EHI-compatible, onboard safety edge (tare weight 21 kg)	

9 feet non reinforced

Height	160 mm	
Weight	14.50 kg	
Load bearing capacity* (at 23° C room temperature)	static	6000 kg
	dynamic	1500 kg
	racked	unsuitable
Article code	Surface	
33-1208N-600-0000 R	smooth	

reinforced, 3 metal tubes lengthwise and 2 crosswise

Height	160 mm	
Weight	17.50 kg	
Load bearing capacity* (at 23° C room temperature)	static	7500 kg
	dynamic	1750 kg
	racked	1300 kg (support on long side)
1300 kg (support on short side)		
Article code	Surface	
33-1208N-609-0500 R	continuous onboard safety edge and centre arresting	

* The load and the weight may vary depending on the number of tubes and their wall thickness. We recommend that you test the pallet before use.



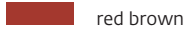
Article code with R = made of UIC® recycled material

Stock items (SKU), for all other items please request the minimum order quantities.

Base dimension **1200 x 1000 mm**



Standard colours



utz UPAL-H

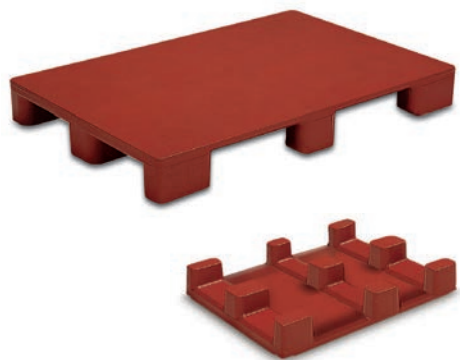
3 runners lengthwise

non reinforced

Height		160 mm
Weight		22.60 kg
Load bearing capacity* (at 23° C room temperature)	static	6000 kg
	dynamic	1500 kg
	racked	500 kg (support on long side) 500 kg (support on short side)
Article code		Surface
33-1210-630 R	smooth	
33-1210-642 R	EHI-compatible, onboard safety edge	

reinforced, 3 metal tubes lengthwise and 2 crosswise

Height		160 mm
Weight		26.00 kg
Load bearing capacity* (at 23° C room temperature)	static	7500 kg
	dynamic	1500 kg
	racked	1300 kg (support on long side) 1300 kg (support on short side)
Article code		Surface
33-1210-634 R	smooth	
33-1210-643 R	EHI-compatible, onboard safety edge	
33-1210-643	EHI-compatible, onboard safety edge	



9 feet

non reinforced

Height		160 mm
Weight		20.00 kg
Load bearing capacity* (at 23° C room temperature)	static	6000 kg
	dynamic	1500 kg
	racked	unsuitable
Article code		Surface
33-1210-600 R	smooth	

reinforced, 3 metal tubes lengthwise and 2 crosswise

Height		160 mm
Weight		24.00 kg
Load bearing capacity* (at 23° C room temperature)	static	7500 kg
	dynamic	1500 kg
	racked	1300 kg (support on long side) 1300 kg (support on short side)
Article code		Surface
33-1210-604 R	smooth	

* The load and the weight may vary depending on the number of tubes and their wall thickness. We recommend that you test the pallet before use.



Article code with R = made of UIC® recycled material

Stock items (SKU), for all other items please request the minimum order quantities.

PALLETS

UPAL-I

Robust, durable and versatile in use

The UPAL-I is a durable industry pallet which is particularly safe to handle. Due to its robust construction, the pallet is long-lasting in use.

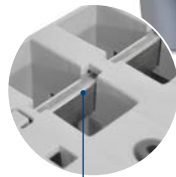
Safety edge

This is outboard, so the entire surface area of the pallet is available.



Steel profiles

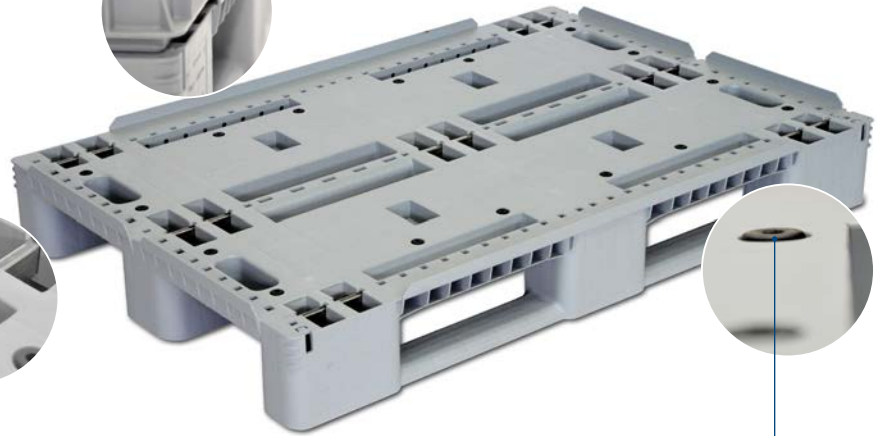
The pallet can be reinforced with up to five steel profiles.



Anti-slip pins

The pins can be mounted subsequently to the upper deck and the lower surface forklift contact area.

Article code 33-1208I-950 (one pin)



Base dimension **1200 x 800 mm**



Standard colour
 dark grey

utz UPAL-I

3 runners lengthwise non reinforced

Height	150 mm	
Weight	11.00 kg	
Load bearing capacity* (at 23° C room temperature)	static	6000 kg
	dynamic	1500 kg
	racked	500 kg (support on long side)
		500 kg (support on short side)
Article code	Surface	
33-1208I-00-00-00 R	smooth	
33-1208I-00-00-00	smooth	
33-1208I-01-00-00 R	outboard safety edge	
33-1208I-01-00-00	outboard safety edge	

* The load and the weight may vary depending on the number of tubes and their wall thickness. We recommend that you test the pallet before use.



Article code with **R** = made of UIC® recycled material

Stock items (SKU), for all other items please request the minimum order quantities.

Base dimension **1200 x 800 mm**



utz UPAL-I

reinforced, 3 steel profiles lengthwise

Weight		13.40 kg
Load bearing capacity* (at 23° C room temperature)	static	6000 kg
	dynamic	1500 kg
	racked	500 kg (support on long side) 1250 kg (support on short side)
Article code	Surface	
33-12081-00-00-02 R	smooth	
33-12081-01-00-02 R	outboard safety edge	

reinforced, 3 steel profiles lengthwise and 2 crosswise

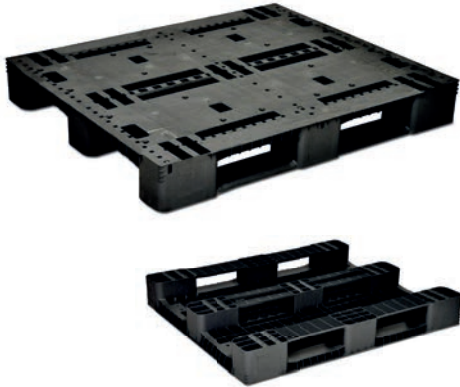
Height		150 mm
Weight		14.50 kg
Load bearing capacity* (at 23° C room temperature)	static	6000 kg
	dynamic	1500 kg
	racked	1250 kg (support on long side) 1250 kg (support on short side)
Article code	Surface	
33-12081-00-00-01 R	smooth	
33-12081-01-00-01 R	outboard safety edge	

* The load and the weight may vary depending on the number of tubes and their wall thickness. We recommend that you test the pallet before use.



Article code with R = made of UIC® recycled material

Base dimension **1200 x 1000 mm**



utz UPAL-I

3 runners lengthwise

non reinforced

Height	150 mm	
Weight	14.50 kg	
Load bearing capacity* (at 23° C room temperature)	static	5000 kg
	dynamic	1500 kg
	racked	500 kg (support on long side)
500 kg (support on short side)		
Article code	Surface	
33-1210I-02-00-00 R	smooth	
33-1210I-03-00-00 R	outboard safety edge	

reinforced, 4 steel profiles lengthwise

Height	150 mm	
Weight	15.50 kg	
Load bearing capacity* (at 23° C room temperature)	static	5000 kg
	dynamic	1500 kg
	racked	500 kg (support on long side)
1000 kg (support on short side)		
Article code	Surface	
33-1210I-02-00-02 R	smooth	
33-1210I-03-00-02 R	outboard safety edge	

reinforced, 4 steel profiles lengthwise and 2 crosswise

Height	150 mm	
Weight	16.50 kg	
Load bearing capacity* (at 23° C room temperature)	static	5000 kg
	dynamic	1500 kg
	racked	1000 kg (support on long side)
1000 kg (support on short side)		
Article code	Surface	
33-1210I-02-00-01 R	smooth	
33-1210I-03-00-01 R	outboard safety edge	
33-1210I-05-00-01 R	interrupted, onboard safety edge	

* The load and the weight may vary depending on the number of tubes and their wall thickness. We recommend that you test the pallet before use.



Article code with **R** = made of UIC® recycled material

Base dimension **1200 x 1000 mm**



utz UPAL-I

**3 runners lengthwise and 2 runners crosswise
non reinforced**

Height		150 mm
Weight		15.00 kg
Load bearing capacity* (at 23° C room temperature)	static	5000 kg
	dynamic	1500 kg
	racked	500 kg (support on long side) 500 kg (support on short side)
Article code		Surface
33-1210I-00-00-00 R		smooth
33-1210I-01-00-00 R		outboard safety edge

reinforced, 4 steel profiles lengthwise

Height		150 mm
Weight		18.20 kg
Load bearing capacity* (at 23° C room temperature)	static	5000 kg
	dynamic	1500 kg
	racked	500 kg (support on long side) 1000 kg (support on short side)
Article code		Surface
33-1210I-00-00-02 R		smooth
33-1210I-01-00-02 R		outboard safety edge

reinforced, 4 steel profiles lengthwise and 2 crosswise

Height		150 mm
Weight		19.60 kg
Load bearing capacity* (at 23° C room temperature)	static	5000 kg
	dynamic	1500 kg
	racked	1000 kg (support on long side) 1000 kg (support on short side)
Article code		Surface
33-1210I-00-00-01 R		smooth
33-1210I-01-00-01 R		outboard safety edge

* The load and the weight may vary depending on the number of tubes and their wall thickness. We recommend that you test the pallet before use.



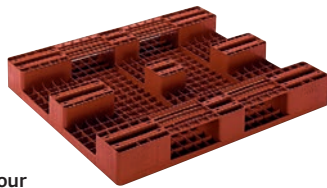
Article code with R = made of UIC® recycled material

PALLETS

Base dimension **1200 x 1000 mm**



Available with anti-slip coating on request.



Standard colour
 red brown



Available with anti-slip coating on request.



utz UPAL-I

3 runners lengthwise and 3 feet

non reinforced

Height	150 mm	
Weight	17.30 kg	
Load bearing capacity* (at 23° C room temperature)	static	5000 kg
	dynamic	1000 kg
	racked	500 kg (support on long side) 500 kg (support on short side)
Article code	Surface	
33-661 R	smooth	
33-661-2 R	interrupted onboard safety edge	
33-661-3 R	continuous onboard safety edge	
33-661-35 R	continuous outboard safety edge 20 mm (weight 19 kg)	

9 feet

non reinforced

Height	150 mm	
Weight	17.30 kg	
Load bearing capacity* (at 23° C room temperature)	static	5000 kg
	dynamic	1000 kg
	racked	unsuitable
Article code	Surface	
33-663 R	smooth	

* The load and the weight may vary depending on the number of tubes and their wall thickness. We recommend that you test the pallet before use.



Article code with R = made of UIC® recycled material

Stock items (SKU), for all other items please request the minimum order quantities.

UPAL-U

Robust, manageable and light

The UPAL-U is also especially quiet on conveyor belts and, with steel reinforcements, suitable for a high-rack warehouse. The pallet is relatively light, so that it can be easily carried with the two reach-trough handles



Smooths upper deck

With two reach-trough handles for easy manual transport.

Base dimension **1200 x 800 mm**



Standard colour
 light grey

utz UPAL-U

3 runners lengthwise

non reinforced

Height		150 mm
Weight		14.00 kg
Load bearing capacity* (at 23° C room temperature)	static	7500 kg
	dynamic	1500 kg
	racked	500 kg (support on long side) 500 kg (support on short side)
Article code	Surface	
33-1208M-00-00	smooth	
33-1208M-02-00	EHI-compatible, onboard safety edge	

reinforced, 4 metal tubes lengthwise

Height		150 mm
Weight		16.00 kg
Load bearing capacity* (at 23° C room temperature)	static	7500 kg
	dynamic	1750 kg
	racked	500 kg (support on long side) 1300 kg (support on short side)
Article code	Surface	
33-1208M-40-00	smooth	
33-1208M-42-00	EHI-compatible, onboard safety edge	

reinforced, 4 metal tubes lengthwise and 2 crosswise

Height		150 mm
Weight		17.00 kg
Load bearing capacity* (at 23° C room temperature)	static	7500 kg
	dynamic	1750 kg
	racked	1300 kg (support on long side) 1300 kg (support on short side)
Article code	Surface	
33-1208M-60-00	smooth	
33-1208M-62-00	EHI-compatible, onboard safety edge	

* The load and the weight may vary depending on the number of tubes and their wall thickness. We recommend that you test the pallet before use.

UPAL-S

Clever, flexible and reinforced suitable for shelf use

The UPAL-S is a robust and sturdy pallet; its stability is enhanced by metal tubes that can be inserted into the recesses provided. As a result of this reinforcement, the UPAL-S is suitable for high-rack warehousing.

Metal reinforcement

Metal tubes increase the stability of the UPAL-S. As a result, the pallet is suitable for high-rack warehousing.

Anti-slip stripes

Non-slip upper deck variant.



Upper deck variants

Increased load safety with different upper deck versions.

Base dimension **1200 x 800 mm**



utz UPAL-S

3 runners lengthwise non reinforced

Height	160 mm	
Weight	14.00 kg	
Load bearing capacity* (at 23° C room temperature)	static	6000 kg
	dynamic	1500 kg
	racked	500 kg (support on short side)
Article code	Surface	
33-1208S-639-000 R	smooth, open, with water drainage holes	
33-1208S-739-000 R	interrupted onboard safety edge, open, with water drainage holes	
33-1208S-939-000 R	continuous onboard safety edge 20 mm, open, with water drainage holes	

* The load and the weight may vary depending on the number of tubes and their wall thickness. We recommend that you test the pallet before use.

Article code with **R** = made of recycled material

Base dimension **1200 x 800 mm**



utz UPAL-S

3 runners lengthwise

non reinforced

Height	160 mm	
Weight	16.00 kg	
Load bearing capacity* (at 23° C room temperature)	static	6000 kg
	dynamic	1500 kg
	racked	500 kg (support on short side)
Article code	Surface	
33-1208S-630-110 R	smooth, with anti-slip stripes	
33-1208S-730-110 R	interrupted onboard safety edge, with anti-slip stripes	
33-1208S-930-110 R	continuous onboard safety edge 20 mm, with anti-slip stripes	

reinforced, 3 metal tubes lengthwise

Height	160 mm	
Weight	19.00 kg	
Load bearing capacity* (at 23° C room temperature)	static	7500 kg
	dynamic	1500 kg
	racked	1250 kg (support on short side)
Article code	Surface	
33-1208S-630-113 R	smooth, with anti-slip stripes	
33-1208S-730-113 R	interrupted onboard safety edge, with anti-slip stripes	
33-1208S-930-113 R	continuous onboard safety edge 20 mm, with anti-slip stripes	

* The load and the weight may vary depending on the number of tubes and their wall thickness. We recommend that you test the pallet before use.

Article code with R = made of recycled material

UPAL-E

Light, functional and stable

The use of a UPAL-E is certainly useful when the cost of returning the empty pallets exceeds their value. Nevertheless, the UPAL-E is loadable and picks up the load in a non-slip manner.

Volume reduction

The cavities in the feet of the UPAL-E allow optimum stacking. 25 pallets nested one inside the other result in a stacking height of only 1 metre.



Runners

They are perforated at the bottom so that liquids can drain off immediately.

Base dimension **1206 x 806 mm**



utz UPAL-E

3 runners lengthwise non reinforced

Height		151 mm
Weight		6.35 kg
Load bearing capacity* (at 23° C room temperature)	static	800 kg
	dynamic	400 kg
	racked	unsuitable
Article code	Surface	
33-1208B-0 R	slotted, onboard safety edge 18 mm	

non reinforced

Height		133 mm
Weight		6.40 kg
Load bearing capacity* (at 23° C room temperature)	static	800 kg
	dynamic	400 kg
	racked	unsuitable
Article code	Surface	
33-1208B-2 R	slotted, smooth	

* The load and the weight may vary depending on the number of tubes and their wall thickness. We recommend that you test the pallet before use.



Article code with R = made of UIC® recycled material

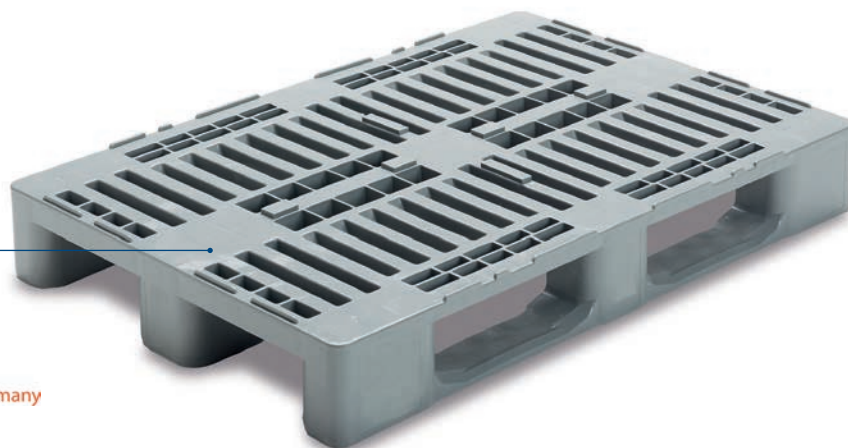
UPAL-H1

Clean, stable and closed all around

The UPAL-H1 is easy to clean and is therefore frequently used in the food, hygiene and clean room segment.

Food-safe

The pallet can also be used for direct contact with meat.



Base dimension **1200 x 800 mm**



utz UPAL-H1

3 runners lengthwise non reinforced

Height		160 mm
Weight		18.00 kg
Load bearing capacity* (at 23° C room temperature)	static	5000 kg
	dynamic	1250 kg
	racked	1000 kg (support on short side)
Article code	Surface	
33-1208H-01-001-IV-18	slotted, with centre arresting, interrupted onboard safety edge, GS1 printing	
33-1208H-03-001-IV	smooth	

* The load and the weight may vary depending on the number of tubes and their wall thickness. We recommend that you test the pallet before use.

UPAL-V

Adjustable, flexible and adaptable

The UPAL-V adapts perfectly to customer requirements: by modifying the number of feet, runners and metal reinforcements, a large number of different versions can be created.

The optional metal reinforcements give the UPAL-V the desired stability and resilience. In addition, feet, runners and metal rods can be readily and easily replaced.

Robust upper deck

The perforated surface with the massive securing edge offers the best load safety.



Metal reinforcement

If required, the UPAL-V can be reinforced with steel profiles.



Base dimension **1200 x 1000 mm**

utz UPAL-V

3 runners lengthwise or 9 feet reinforced, 6 metal tubes

Height		160 mm
Weight		17.70 kg
Load bearing capacity* (at 23° C room temperature)	static	3000 kg
	dynamic	1500 kg
	racked	500 kg
Article code	Surface	slotted, interrupted outboard safety edge 22 mm
33-1210V-3GS6R		

Circular runners reinforced, 7 metal tubes

Height		160 mm
Weight		18.90 kg
Load bearing capacity* (at 23° C room temperature)	static	5000 kg
	dynamic	2500 kg
	racked	1000 kg
Article code	Surface	slotted, interrupted outboard safety edge 22 mm
33-1210V-4S7R		



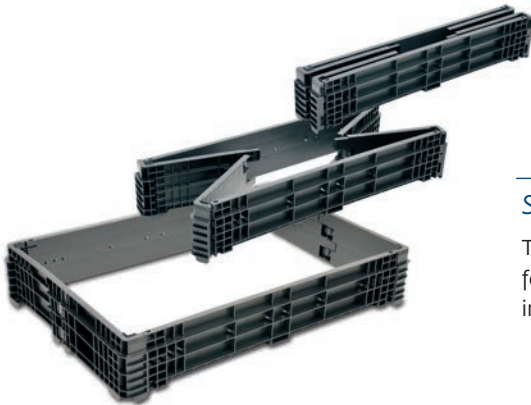
* The load and the weight may vary depending on the number of tubes and their wall thickness. We recommend that you test the pallet before use.

Article code with **R** = made of recycled material

Stacking frame 1200 x 800 mm

Lightweight with high stability

It is the hygienic alternative to wooden pallet frames, as there is no contamination by splinters and therefore no risk of injury. The frames are easy to fold and space-saving to store.



Save space

Three folded frames lying or four folded frames standing fit into an open frame.

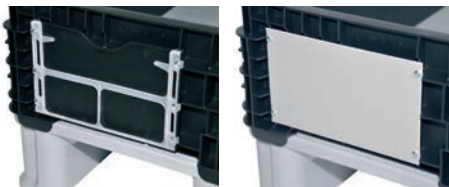


Standard colour
dark grey

To fit plastic and wooden pallets

External dimensions	1213 x 813 x 200 mm
Internal dimensions	1141 x 742 x 200 mm
Weight non reinforced	5.80 kg
Weight reinforced	6.40 kg
Article code	Model
34-128-2000-00 R.1	non reinforced
34-128-2001-00 R.1	metal reinforcements on both long sides

Accessories



Label holder

Article code	Model
41-13-1	label holder with back plate
26-2-0118	plate for labels, lettering, or nobbed surface (250 x 150 mm)



Lids 1200 x 800 mm

Article code	Model
40-1208-1	cover
40-1208	slip lid

Standard colour
pale blue



Article code with R = made of UIC® recycled material

Stock items (SKU), for all other items please request the minimum order quantities.

PALLETS

Stacking frame *euroframe / eurofold*



Standard colour
light grey/black



Standard colour
black

Adapter for pallets



To fit pallets 1200 x 800 mm

External dimensions	1200 x 800 x 400 mm
Internal dimensions	1150 x 750 x 400 mm
Weight	9.60 kg

Article code	Model
58-1208-2	rigid, plastic corner profiles
58-1208	rigid, reinforced, plastic corner profiles
58-1208-1	foldable, plastic corner profiles
58-1208-0-101	rigid, INOX steel corner profiles

Lid 1200 x 800 mm

External dimensions	1200 x 800 mm
Weight	6.00 kg

Article code	Model
58-1208-3	loose lid

To fit pallets 800 x 600 mm

External dimensions	800 x 600 x 400 mm
Internal dimensions	750 x 553 x 400 mm
Weight	7.00 kg

Article code	Model
58-8060	rigid, plastic corner profiles
58-8060-0-101	rigid, INOX steel corner profiles

Corner element

External dimensions	55/55 x 400 x 3 mm
Weight	0.30kg

Article code	Model
58-5976	corner element made of HDPE, to fit euroframe

To fit plastic and wooden pallets

Article code	External dimension	To fit
21-0600-3	812 x 612 mm	UPAL-H 800 x 600 mm with smooth upper deck
20-2126	1210 x 810 mm	UPAL-H 1200 x 800 mm with smooth upper deck

Stock items (SKU), for all other items please request the minimum order quantities.

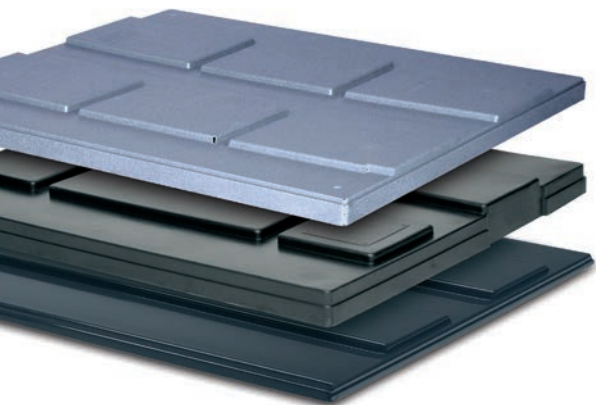
Covers



- 3-223U-0
- 21-0600-3
- 20-2103-2
- 102-8605
- 9-40074



- 53-1208A-1 R
- 40-1208-1
- 20-0751
- 20-0751-2
- 20-2126
- 40-1208



- 40-1210-5
- 20-2127-1
- 21-0780-1

Base dimension 800 x 600 mm

Article code	External dim.	Model
3-223U-0	810 x 610 mm	slip lid
21-0600-3	812 x 612 mm	slip slid
20-2103-2	810 x 608 mm	cover
102-8605	812 x 612 mm	cover
9-4074	810 x 620 mm	adapter lid suitable for the fixing of tension belts





Base dimension 1200 x 800 mm

Article code	External dim.	Model
53-1208A-1 R	1215x813 mm	cover
58-1208A-1	1215x813 mm	cover
40-1208-1	1204 x 808 mm	cover to fit UPAL-U, UPAL-H, UPAL-I
20-0751	1227 x 817 mm	cover to fit UPAL-U, UPAL-H, UPAL-I
20-0751-2	1220 x 820 mm	cover with guide notches, to fit combination frame 34-1280-2
21-8030 S	1223 x 820 mm	cover to fit UPAL-S
21-8030 I	1223 x 820 mm	cover to fit UPAL-I
21-8030 H	1223 x 820 mm	cover to fit UPAL-H
20-2126	1210 x 810 mm	cover to fit UPAL-H
40-1208	1204 x 808 mm	cover to fit UPAL-H

Base dimension 1200 x 1000 mm

Article code	External dim.	Model
40-1210-5	1210 x 1010 mm	cover
20-2127-1	1210 x 1010 mm	cover
21-0780-1	1210 x 1010 mm	slip lid to fit UPAL-I, for VDA containers

Standard colours

-  dark grey
-  black
-  pale blue
-  light grey

Stock items (SKU), for all other items please request the minimum order quantities.



myclimate
 Engaged for Impact
 Operations
myclimate.org/01-23-220757



*We are a climate-neutral company.
 Discover more under www.utzgroup.com*



utzgroup.com

Georg Utz AG • Au graben 2-4 • 5620 Bremgarten • Switzerland
 Phone +41 56 648 77 11 • info.ch@utzgroup.com • www.utzgroup.com